



IfCC

WORLD LAB

2024 MAY
26-30

In cooperation with



26th International Congress of
Clinical Chemistry and Laboratory Medicine

17th Congress of Arab Federation of Clinical Biology

10th Saudi Society for Clinical
Chemistry Annual Meeting

8th UAEGDA International Genetic
Disorders Conference

Dubai World Trade Centre (DWTC)
DUBAI - UAE



LIST OF CONTENTS

Congress President Message	1
Congress Co-Chairs Messages	2
President Arab Federation of clinical biology Message	4
Founder and Chairperson of UAE Genetic Disease Association Message	5
Scientific Program Committee Co-Chairs Message	6
Committees & Executive Boards	8
IFCC Awards & Scholarships	11
Week Agenda	12
Accreditation	16
Scientific Program	17
Closed Meetings	58
Speakers & Chairs	60
Congress Venue	66
General Information	67
Venue Map	69
Company Profiles	71
Exhibition Area	88
Sponsors	90

IFCC WorldLab APP

The App is designed to enrich delegates', visitors', and exhibitors' experience. Search "IFCC WorldLab 2024" in the App Store or Google Play and download:



Congress President Message

Dear Colleagues and Friends,

On behalf of the International Federation of Clinical Chemistry and Laboratory Medicine (IFCC), it is my distinct pleasure and honor to welcome you to the 26th International Congress of Clinical Chemistry and Laboratory Medicine (ICCCLM) - IFCC WorldLab Congress organized jointly with the 17th Congress of the Arab Federation of Clinical Biology (AFCB); 10th Annual Meeting of the Saudi Society for Clinical Chemistry (SSCC) and 8th International and United Arab Emirates (UAE) Genetic Disorders Conference in partnership with MZ Events held in Dubai World Trade Centre (WTC) from May 26 to May 30, 2024.

WorldLab Congress stands as a pinnacle event within the realm of laboratory medicine, bringing together scientists, researchers, clinicians, and experts from the In Vitro Diagnostics industry for a rewarding five-day experience of scientific exploration and education. The 3rd IFCC FORUM for Young Scientists and IFCC Council meeting are organized before the main Congress.

The Scientific Program Committee has prepared an exceptional, thought-provoking, and inspirational multidisciplinary program encompassing fundamental concepts, advanced diagnostics, and cutting-edge techniques in laboratory medicine. Esteemed international speakers and key opinion leaders will address various topics including healthcare, recent diagnostic technologies, scientific breakthroughs, and challenges.

Renowned for its comprehensive program, the congress features a dynamic array of plenary lectures, symposia, workshops, and poster presentations, covering a wide spectrum of subjects. It serves as a vital platform for collaboration, innovation, and exchange of cutting-edge knowledge within the field.

WorldLab 2024 serves as a platform to showcase the latest technologies and innovations in laboratory medicine and explore their potential applications in healthcare. This gathering fosters collaboration among researchers and clinicians, ultimately advancing patient care and outcomes. The Congress is accredited by the EFLM CPECS®, a quality assurance mechanism to provide Continuing Professional Development for participants.

My heartfelt thanks for In Vitro Diagnostic Sector, their continuous support and contribution have made possible the accomplishment of this Congress. The In Vitro Diagnostic (IVD) Sector plays a vital role in the Congress by organizing two essential activities. High-level Educational Workshops on important topics with eminent speakers presenting the latest scientific advances in all disciplines relevant to laboratory medicine. The IVD Sector also organizes a great exhibition, providing attendees with a prime opportunity to explore recent technological advancements, products, and services aimed at enhancing laboratory operations. These customized solutions address the specific requirements of clinical laboratories, ensuring attendees acquire valuable insights and access to state-of-the-art tools in the field.

The objective of this meeting is not only to contribute to the advancement of laboratory medicine and to the dissemination of advanced knowledge, but also to foster the creation of an opportunity to establish professional and scientific links/bridges among the participants.



I would like to extend our gratitude and thanks to all those who have made it possible for this congress to become a reality, especially I would like to thank all the eminent speakers, IVD industry representatives, and all the participants attending the Congress from different countries all around the world. I would like to thank the Professional Congress Organizer (MZ) for their efforts to organize the congress successfully.

I extend my heartfelt wishes to all participants for a delightful stay in Dubai, where the 26th WorldLab promises to be an unforgettable congress. It offers an extraordinary opportunity to engage with leading experts and scientists, enjoy an inspiring scientific program, explore the exhibition, and take part in networking and social activities. May your time here be both rewarding and worthwhile.

*Prof. Tomris Ozben
EuSpLM, Ph.D., Full
Professor of Clinical
Biochemistry
IFCC, President
WorldLab Dubai 2024,
Congress President*



Congress Organizing Committee Co-chair Message

It gives me immense pleasure to extend a warm welcome to all participants of the XXVI IFCC WorldLab Congress, jointly hosted by the IFCC, Arab Federation of Clinical Biochemistry, Saudi Society of Clinical Chemistry, and the UAE Genetics Association. This marks the inaugural occasion of WorldLab being held in the Middle East, congregating experts from across the globe in the vibrant city of Dubai, now recognized as one of the world's most dynamic and technologically advanced cities. The 2024 WorldLab Congress will unite laboratory professionals and scientists from the UAE, various Arab Federation countries, and other regional federations within IFCC including Africa, Europe, North America, Central/South America, and Asia-Pacific. Anticipated to be the most successful IFCC WorldLab outside Europe, this event arrives at a pivotal moment in the evolution of clinical chemistry and laboratory medicine. We are amidst significant scientific and technological progressions, empowering our professionals to play an increasingly pivotal role in healthcare.

This timely congress provides an exceptional platform for international discourse on these advancements and facilitates collaboration among peers. The biannual WorldLab congress has consistently served as a premier forum, fostering dialogue among scientists, laboratory specialists, clinicians, and industry professionals in the field. Such gatherings facilitate scientific exchange, ensuring that our organization and the field of clinical chemistry and laboratory medicine remain at the forefront of innovation.

Throughout the congress, attendees will engage in a stellar scientific program, featuring a diverse range of educational opportunities encompassing the latest developments in clinical laboratory medicine and in vitro diagnostics. From lectures and symposia to poster presentations, the program promises to be both innovative and comprehensive. Notably, a significant focus will be placed on technological advancements, aiming to bridge the gap between cutting-edge diagnostic laboratory technology and clinical practice.

Beyond the scientific agenda, Dubai offers a cosmopolitan backdrop, providing ample opportunities for social engagement and exploration. I trust that you will relish both the enriching scientific discourse curated by the organizing and scientific committees, as well as the vibrant social experiences awaiting you in Dubai.

I extend my best wishes to all of you for a memorable stay in Dubai and look forward to seeing and meeting many of you soon!

Prof Khosrow Adeli

*Prof. Khosrow Adeli
Co-Chair
Congress Organizing
Committee
Past President, IFCC*

Congress Organizing Committee Co-chair Message

Dear esteemed attendees,

As a co-chair of the 26th Worldlab Meeting of the International Federation of Clinical Chemistry (IFCC), I am delighted to extend a warm welcome to all participants of the upcoming event in the Arab world for the first time. The meeting will be jointly hosted with the 17th Arab Federation of Clinical Biology (AFCB), the 10th Annual meeting for the Saudi Society for Clinical Chemistry (SSCC), and the 8th UAE Genetic Disorders Conference, in cooperation with the Emirates Clinical Chemistry Society (ECCS).

For this event, the scientific committee worked hard to create an exciting program covering the most relevant and recent aspects of clinical laboratory medicine and patient care. To achieve this, outstanding local and international experts in clinical laboratory were selected as speakers and moderators for the scientific program. This will provide an opportunity to develop new personal relationships within the region and other parts of the world, facilitating the exchange of experience, knowledge, and skills.

We are pleased to announce that this year's meeting has received more than 1600 accepted abstracts from all over the world. This number reflects the enthusiasm of laboratory professionals to engage in the event.

As we gather in Dubai for the IFCC meeting, let us take advantage of this unique opportunity not only to enrich the scientific discussions but also to explore and experience all that this remarkable city has to offer. Dubai, where innovation meets tradition, offers a wealth of attractions and experiences during the stay of our attendees, including its cultural heritage, world-class amenities, warm hospitality, and accessibility from all over the globe.

SSCC is dedicated to making Worldlab 2024 an unforgettable meeting for all attendees, and I look forward to welcoming you to Dubai for what promises to be an unforgettable experience.

Warm regards,

Prof. Anwar Borai



*Prof. Anwar Borai
Co-chair
IFCC Worldlab 2024
SSCC Representative
to the IFCC*



President Arab Federation of Clinical Biology Message

Dear attendees, colleagues, and friends,
Welcome to IFCC Worldlab 2024 in Dubai, an event organized jointly with the Arab Federation of Clinical Biology, the Saudi Society for Clinical Chemistry, and the United Arab Emirates Genetic Diseases Association. This promising partnership heralds new insights in the field of biology, fostering collaborations and exploring new horizons.
It's the first time such a congress is held in an Arab country, and everything has been orchestrated to ensure its tremendous success. This collaboration between nations aims to exchange expertise and knowledge, while also providing young individuals the opportunity to explore their future careers, gain valuable insights, and forge professional networks that will enable collaborative work across various countries. We take pride in the enthusiastic hosting of this event by the Arab countries, accompanied by active participation from their scientists in various activities. This congress aims to open a window to the international community for our colleagues from the Arab world.
The venue for this congress is no ordinary one. Dubai, a true melting pot of cultures, provides the perfect backdrop for the emergence of brilliant enterprises and futuristic projects. Beyond its unparalleled tourist attractions, Dubai embodies a bustling hive, working tirelessly to make this corner of the world a platform for a different worldview, uniting people from around the globe driven by the need for peace, stability, and a desire to contribute positively to society. This is complemented by the traditional Arab hospitality, making everyone feel at home in a country known for its warmth and welcoming nature.
As we embark on this journey together, let us seize the opportunities presented by this congress to exchange knowledge, forge collaborations, and chart a course towards a future where healthcare knows no bounds. The IFCC, Saudi Arabia, the United Arab Emirates, and all Arab countries join together to wish everyone a successful congress, fostering a sense of fraternity in a world torn apart by wars and intolerance. Let us gather here for a better world, improved patient care, and a bright future for our profession. And may this congress be a catalyst for transformative change, empowering us all to make significant strides in the realm of clinical biology.

Christian Haddad

*Dr. Christian Haddad
President Arab
Federation of Clinical
Biology (AFCB)*

Chairperson UAE Genetic Diseases Association Message

Dear Esteemed Attendees, Colleagues, and Friends,
Please allow me to extend my warmest welcome to Dubai, UAE, for the first International Federation of Clinical Chemistry (IFCC) WorldLab conference in the Middle East.
It is our sincere honor to co-host this event with the Saudi Society for Clinical Chemistry (SSCC) in partnership with the IFCC and the Arab Federation of Clinical Biochemistry (AFCB). Together, we have delivered a dynamic program that offers a unique blend of insights across academia and industry.
We are thrilled to welcome to our stage, renowned speakers from a wide variety of disciplines. For our UAEGDA sessions, we have intentionally focused on spotlighting talent within the UAE, as well as supporting our international friends.
On this special occasion, the UAEGDA celebrates its 20th Anniversary, a fitting event to highlight our continued commitment to our mission. We nurture innovation and education to prevent challenges faced by individuals with genetic disorders in the UAE and the region. At present, the medical field is ever evolving and changing at a rapid pace. Now is the time to focus and understand the future of Medicine. With new technologies emerging, and paving the way for breakthrough after breakthrough, we must keenly share our findings for the benefit of humankind.
We cannot wait to share our knowledge and city with you, as we embark on this exciting journey of learning and growth!

Our vibrant city of Dubai awaits you!
Dr. Maryam bin Matar, M.D, PhD



*Dr. Maryam bin Matar,
M.D, PhD,
Founder and Chairperson
of UAE Genetic Disease
Association*



Professor Christa Cobbaert
Co-Chairs Scientific Program Committee



Dr Samia Sobki
Co-Chairs Scientific Program Committee

Scientific Program Committee co-Chairs Message

We are delighted to welcome you at the IFCC WorldLab in Dubai from May 26 through May 30, 2024. Along with the organizing committee, the scientific program committee for the conference is eager to create a stimulating scientific agenda that covers the most important trends and innovations in clinical laboratory medicine and patient care. The fundamental goal of the conference has been to globalize medical knowledge in Clinical Chemistry and Laboratory Medicine through a carefully structured system of ongoing scientific education. The Scientific Committee worked hard to create an amazing, challenging, and inspiring program. A scientific program addressing the present and future developments in clinical laboratory science, novel emerging lab technologies, updated diagnostic methodologies, discussion of global health issues, contemporary quality applications, and digitalization of clinical laboratories. The congress will provide lots of educational opportunities as renowned international speakers, inventors and innovators will update you on the state-of-science in laboratory medicine. Attendees will enjoy an amazing scientific program. The titles and speakers of the plenaries are displayed; the symposia are balanced and will specifically cover the themes of Emerging Technologies & Biomarkers, Data Science and Medical Leadership, among others. These educational opportunities will combine the best of clinical laboratory medicine and in vitro diagnostics. The congress will provide the attendees opportunity to make significant improvements, refresh their scientific knowledge with our excellent specialists, and build new personal ties within the area and throughout the world via the sharing of experience, information, and skills. As well, the congress will promote the development of Clinical Chemistry and Laboratory Medicine. We sincerely hope you will have the opportunity to exchange experiences, to network, and to participate in the most cutting-edge research in laboratory medicine.

All of our international and national participants attending IFCC WorldLab will undoubtedly have a rewarding and memorable experience.

Professor Christa Cobbaert
Dr Samia Sobki



Smaller Footprint Higher Efficiency

Total Laboratory Automation Solutions



SATLARS™-T8



Efficiency



Flexibility



Intelligence



Compatibility

May 26-30, 2024

Dubai World Trade Centre
Booth No.: 8



COMMITTEES

Conference Organizing Committee (COC)

Tomris Ozben, Congress President
 Khosrow Adeli, Co-Chair
 Anwar Borai, Co-Chair
 Paivi Laitinen
 Alexandre Haliassos
 Samia Sobki
 Christa Cobbaert
 Christian Haddad
 Osama Najjar
 Maryam Matar
 Angel De La Fuente
 Vincent Chen
 Stefano Montalbetti

United Arab Emirates (UAE) Advisory Group to COC & SPC

Hady Elkhodary
 Aaron Han
 Rita Tanios
 Laila Abdel Wareth
 Fayha Salah Ahmed
 Rana Nabulsi
 Jyoti Shetye
 Mahammad Althahyabat

Scientific Program Committee (SPC)

Samia Sobki, Co-Chair
 Christa Cobbaert, Co-Chair
 Salam Saadaddin
 Nader Rifai
 Mario Plebani
 Abderrazek Hedhili
 Myrna Germanos Haddad
 Santiago Fares Taie
 Shaikha Almazrouei

International Scientific Advisory Board (ISAB)

Anna Carobene (EFLM)
 Snezana Jovicic (EFLM)
 Michel Langlois (EFLM)
 Abdurrahman Coskun (EFLM)
 Timo Kouri (EFLM)
 Tze-Ping Loh (APFCB)
 Endang Hoyaranda (APFCB)
 Tony Badrick (APFCB)
 Bolonghoge Dayanath (APFCB)
 Leslie Lai (APFCB)
 José Francisco Muñoz-Valle (COLABIOCLI)
 Marlene Vélez de la Vega (COLABIOCLI)
 Cecilia Tapia Paredes (COLABIOCLI)
 Cristina Servetto (COLABIOCLI)
 Alvaro Justiniano Grosz (COLABIOCLI)
 Rajiv Erasmus (AFCC)
 Adekunle Okesina (AFCC)
 Tahir Pillay (AFCC)
 Vanessa Steenkamp (AFCC)
 Mari DeMarco (NAFCC)
 Stacy E. Melanson (NAFCC)
 Qing Meng (NAFCC)
 AbdulRazaq A. H. Sokoro (NAFCC)
 Alison Woodworth (NAFCC)



IFCC Executive Board

Tomris Ozben, President
 Khosrow Adeli, Past President
 Sergio Bernardini, Secretary
 Alexander Haliassos, Treasurer
 Tricia Ravalico, Corporate Representative
 Rajiv Erasmus, African Federation of Clinical Chemistry (AFCC)
 Osama Najjar, Arab Federation of Clinical Biology (AFCB)
 Tony Badrick, Asia-Pacific Federation for Clinical Biochemistry and Laboratory Medicine (APFCB)
 Mario Plebani, European Federation of Clinical Chemistry and Laboratory Medicine (EFLM)
 Eduardo Freggiaro, Latin-American Confederation of Clinical Biochemistry (COLABIOCLI)
 David Grenache, North American Federation of Clinical Chemistry and Laboratory Medicine (NAFCC)

AFCB Board

Christian Haddad, President
 Imad Itani, Honorary President
 Abderrazek Hedhili, Vice- President
 Osama Najjar, Past-President
 Touimi Benjelloun, General Secretary
 Akil Zoghaib, Treasurer
 Imad Fadl-Elmula, Scientific Committee President
 Youssef Bilty, Member
 Abdelhalim Chachou, Member
 Aayad Abbud, Member
 Adnan Al-Khatib, Member
 Samia Sobki, Member

SSCC Board

Samia Hasan Sobki, President
 Ali Fahad Alothaim, Vice President
 Nawaf Dakhelallah Alotaibi, Treasurer
 Zuhair Ahmed Awan, Secretary of the Board
 Salam Mohammed Saaddeen, Member Board
 Waleed Saleh Alomaim, Member Board
 Ali Mohammed Alshangity, Member Board
 Khalid Khalaf Alharbi, Member Board
 Malak AtaallahAlmashali, Member Board



Abstract Evaluation Committee

Adekunle Bashiru Okesina
 Abderrazek Hedhili
 Abdurrahman Coskun
 Ana Lena
 Ana Ninic
 Andrea Mosca
 Angela Fung
 Antonio Fortunato
 Ashlin Rampul
 Ayman W. El-Hattab
 Benjamin Jung
 Bremadesam Raman Lakshmi
 Christa M. Cobbaert
 David Vauzour
 Davide Giavarina
 Endang Hoyaranda
 Enza Pavanello
 Ettore Capoluongo
 Evelyne Bischof
 Fahad Al Zadjali
 Fatima Jamali
 Ferruccio Ceriotti
 Florent van Stapel
 Giuseppe Banfi
 Greg Ward
 Hanan Jambi
 Ian Young
 Iva Perovic Blagojevic
 Janne Cadamuro
 John Anetor
 Jorge Hernández-Bello
 Joris Delanghe
 Jun Guan Tan
 Kari Pulkki
 Laila Osama AbdelWareth
 Laura Sciacovelli
 Leslie Lam
 Li Jieli
 Lotta Joutsu-Korhonen

M. Azzam Kayasseh
 Manal Al Kindi
 Marco Cantù
 Mario Plebani
 Matteo Vidali
 Michel Langlois
 Mohamedi Begum Rafiq Ahmed
 Mohammed Qutub
 Myrna Germanos
 Nader Rifai
 Nafila Bazdawi Al Riyami
 Nicasio Mancini
 Paola Pezzati
 Patrick Bossuyt
 Pavai Sthaneswar
 Pieter Vermeersch
 Renee Ruhaak
 Rifat Hamoudi
 Riikka Kurkijärvi
 Rivak Punchoo
 Ronda Greaves
 Sander de Bruyne
 Shereen Hassan Atef
 Snežana Jovicic
 Solveig Linko
 Subashini C. Thambiah
 Tahir Pillay
 Thomas Streichert
 Timo Kouri
 Tina Lockwood
 Tommaso Fasano
 Tommaso Trenti
 Tony Badrick
 Udara Senarathne

Vanessa Steenkamp
 Vera Lukić
 Wafaa Ayesha
 Waleed Tamimi
 Xavier Bossuyt
 Yahya Kiwan



IFCC Awards

IFCC-Howard Morris Distinguished Clinical Chemist Award (since 2020) IFCC Distinguished Clinical Chemist Award (1969-2017) – *Sponsored by Yashraj Biotechnology Ltd.*
 IFCC Award for Significant Contributions in Molecular Diagnostics – *Sponsored by Abbott Laboratories*
 IFCC Distinguished Award for Laboratory Medicine and Patient Care – *Sponsored by Snibe*
 IFCC Distinguished Award for Contributions to the Cardiovascular Diagnostics – *Sponsored by HyTest*
 IFCC-Gérard Siest Young Scientist Award for Distinguished Contributions in Pharmacogenetics – *Sponsored by Biologie Prospective*
 IFCC Distinguished Women Scientist Award for Contribution to In Vitro Diagnostics – *Sponsored by Yashraj Biotechnology Ltd.*

IFCC Scholarships

Mia Jade Gruzin (AU)
 Naila Hasanova (AZ)
 Nick Narinx (BE)
 Milena Danda Vasconcelos Santos (BR)
 Li Wendi (CN)
 Rayan Suliman (DE)
 Asma Lakhdari (DZ)
 Laura Valina Amado (ES)
 Betselot Zerihun Ayano (ET)
 Chala Bashea Hailu (ET)
 Emeline Gernez (FR)
 Mariam Kvezereli (GE)
 Aristeia Milona (GR)
 Tara Rolic (HR)
 Attila Adam Szabo (HU)
 Juliyatin Putri Utami (ID)
 Ratna Apriyanti (ID)

Sudhahar Tamilan (IN)
 Rupali Bains (IN)
 Anjali Sudha (IN)
 Marilyn Masih (IN)
 Milad Khorasani (IR)
 Jamal Amri (IR)
 Adelaide Akinyi Odera Nam (KE)
 Francis Kiigu Wathigo (KE)
 Sana Yaacoub (LB)
 Menaka Balasooriya (LK)
 Zeenath Thaneefa (LK)
 Amina Himri (MA)
 Francisco Josué Carrillo Ballesteros (MX)
 Mohd Amirul Hamudin (MY)
 Collins Uchechukwu Obi (NG)
 Mercy Luka Salomon (NG)
 Cindhya Sithiravel (NO)

Lisa Tamang Ghising (NP)
 Rajan Paudel (NP)
 Kim Garol Sarong (PH)
 Hira Azeem (PK)
 Rozan Romel Fawzi Attili (PS)
 Rana Kareem Khanafsa (PS)
 Jonatas Barbosa Garcez (PT)
 Gladys Melisa Florentin Candia (PY)
 Monica Dugaesescu (RO)
 Dongdong Liu (SG)
 Marija Saric Matutinovic (SRB)
 Kübranur Ünal (TR)
 Charlotte Lucy Evans (UK)
 Jose Manuel Laramendi Embid (UY)
 Genzane Mucaj Kurti (XK)
 Elvis Ngwa Ndowni (ZA)

AFCB Scholarships

Stephanie El Hawat (LB)
 Tamer Ibrahim Shabaneh (PS)
 Elcy Tufenkji (SY)
 Mais Bashimam (SY)
 Maya Ben Cheikh (TN)
 Mohamad Hashim Alradeh (PS)

Roche Scholarships

Amal Yousfan (SY)
 Eiman Mohammad Shahrour (SY)
 Ghada Ben Faiza (TN)
 David Chisompola (ZM)
 Simbarashe Nickwell Mapurisa (ZW)

Werfen Scholarship

Oussama Grari (MA)
 Dana Jallouli (TN)
 Saarah Davids (ZA)

SUNDAY 26 MAY 2024

ROOM E

17.00	Opening Ceremony
20.00	Pushing forward the frontier of cfDNA diagnostics Welcome Cocktail

MONDAY 27 MAY 2024

	ROOM E	ROOM A	ROOM B	ROOM C	ROOM D	ABU DHABI B	ROOM F
9.00 11.00	IFCC SYM 1 Present and future of chronic kidney disease and acute kidney injury detection	SYM 1 The promise of -omics biomarkers	EFLM SYM Green Laboratories	AFCB SYM 1 Metabolic diseases in Arabic countries	WASPALM The role of clinical laboratory in the development of new drugs	SYM 2 Aptamers based diagnostic for biomedical applications	09.15-10.30 UAE GDA Longevity, diet & smart aging I 10.30-11.00 UAE GDA Longevity, diet & smart aging II
11.00	Break						
11.30 12.30	PL 1 Precision, Prevention and Women's Cardiovascular Health: A Global Perspective						
12.30 13.00	Poster Session Lunch						
13.00 14.00				LW2 QUIDELORTHO Convergence of Clinical Diagnostics and Population Health.			WORKSHOP UAE GDA Genetics for Non-Genetists
14.30 15.30	IFCC SYM 2 Flowcytometry principles and its roles	EDUW 1 SNIBE Insights on the Laboratory Medicine	EDUW 4 WATERS Simpler, Smarter Solutions: Waters Total LC-MS/MS Workflow	EDUW 2 ABBOTT Empowering Healthcare: Unveiling Strategic Approaches in Clinical Laboratory Medicine for Enhanced Diagnoses, Treatment, and Outcomes	SYM 3 Regulatory challenges for lab-developed-tests		14.00-16.00 UAE GDA Genomics & Microbiome Discoveries
16.00 17.00							16.15-17.00 UAE GDA Panel: longevity & smart aging

EXHIBITION HALL 10.00 - 17.30 Exhibition open

TUESDAY 28 MAY 2024

	ROOM E	ROOM A	ROOM B	ROOM C	ROOM D	ABU DHABI B	ROOM F
9.00 11.00	IFCC SYM 3 The potential of single cell and spatial biology	SYM 4 The role of laboratory medicine in Direct-To-Consumer Testing (DTCT)	SSCC SYM 1 Inborn errors of metabolism in Saudi Arabia"	SYM 5 Machine learning and clinical decision support: technologies that genuinely make people's life better	APFCB SYM Clinical decision support	UAE 1 Metabolic and noncommunicable diseases	09.15-10.15 UAE GDA Stem cells & regenerative medicine 10.20-11.20 UAE GDA Advancing cancer care
11.00	Break						
11.30 12.30	PL 2 Genomics in the Middle East: A report card						
12.30 13.00	Poster Session Lunch						
13.00 14.00			LW8 GREINER BIO-ONE Managing the blood sampling volumes: why, who and how?				WORKSHOP UAE GDA Genetics for Non-Genetists
14.30 15.30	IFCC SYM 4 On the way to cardiovascular precision diagnostics	EDUW 9 SNIBE Updates on Standardization and Harmonization in Immunoassays	EDUW 12 BUHLMANN Fecal Calprotectin: A Biomarker for Gastrointestinal Inflammation in IBD - Clinical Insights and Efficient Laboratory Workflow	EDUW 10 ABBOTT New Perspectives for the Utility of Big Data Analysis to Derive Reference Intervals Using Indirect Methodology	EDUW 11 MINDRAY Cardiovascular Disease: From Laboratory Diagnosis to Challenges	SYM 6 Digital competence and artificial intelligence	14.00-16.00 UAE GDA Leading precision therapies
16.00 17.00							16.15-17.00 UAE GDA Panel: stem cells & regenerative medicine

EXHIBITION HALL 10.00 - 17.30 Exhibition open

WEDNESDAY 29 MAY 2024

	ROOM E	ROOM A	ROOM B	ROOM C	ROOM D	ABU DHABI B	ROOM F
9.00 11.00	IFCC SYM 5 Biomarkers for neurodegenerative diseases	SYM 7 Meeting the challenge of demonstrating value	SYM 8 How to improve access to lab testing in middle & low income countries?	AFCB SYM 2 Epidemic and pandemic infectious in Arabic regions	SYM 9 Healthcare delivery in the 21st century and the role of the clinical laboratory	COLABIO-CLI SYM Emerging and re-emerging diseases in Latin America	09.15-11.00 UAE GDA Genomics of rare diseases I
11.00	Break						
11.30 12.30	PL 3 Obesity: novel developments in diagnostics of underlying causes and treatment						
12.30 13.00	Poster Session Lunch						
13.00 14.00							WORKSHOP UAE GDA Genetics for Non-Genetists
14.30 15.30	NAFCC SYM Laboratory medicine advancing global health across the lifespan	EDUW 17 SNIBE Looking beyond the future of Laboratory Medicine	SYM 10 Toxicology environmental and health effects		AFCC SYM Inborn errors of metabolism in africa		14.00-16.00 UAE GDA Genomics of rare diseases II
16.00 17.00							16.15-17.00 UAE GDA Genomics of rare diseases III

EXHIBITION HALL 10.00 - 17.30 Exhibition open

■ Session with accreditation

THURSDAY 30 MAY 2024

	ROOM E	ROOM A	ROOM B	ROOM C	ROOM D	ABU DHABI B	ROOM F
9.00 11.00	SYM 11 Circulating cancer biomarkers: quo vadis?	SYM 12 Preventing kidney disease using advanced urine screening and kidney damage markers	SSCC SYM 2 Dysglycemia - novel biomarkers for diagnosis and monitoring prognosis	SYM 13 Performance specifications of medical tests based on clinical outcome studies	SYM 14 Utilization management and successful approaches to change and improve test requesting	UAE 2 AI & machine learning applications in laboratory medicine	09.15-10.45 UAE GDA Global health AI: uniting nations for genomic insights and data governance 10.45-11.30 UAE GDA Panel: genomics in the metaverse
11.00	Break						
11.30 12.30	PL 4 Making molecular diagnostics faster						
12.30 13.00	Closing Ceremony						



IFCC WorldLab 2024 is accredited!

EFLM Continuing Professional Education Credit System – CPECS®

The 26th International Congress of Clinical Chemistry and Laboratory Medicine (IFCC), the 17th Congress of Arab Federation of Clinical Biology, the 10th Saudi Society for Clinical Chemistry Annual Meeting and the 8th UAEGDA International Disorders Conference are accredited by the EFLM CPECS® to deliver CPECS® credits for participants.

EFLM CPECS® is an administrative system that provides a quality assurance mechanism for the accreditation of continuing education programs and events offered based on high-quality continuing education content in laboratory medicine and relevant scientific topics.

In those countries where a national crediting system is not in place, the CPECS® system can directly represent the system adopted at national level for the certification of the educational events and may recognize CPECS® credits on a voluntary basis.

Delegates from Saudi Arabia who are interested in obtaining CME units (Accredited by the **SCFHS**) should adhere to the same guidelines set for CPECS credits.

Breakdown of credits

A maximum of 19,5 CPECS® credits can be awarded for the educational sessions of the IFCC WorldLab 2024. Each participant has to attend at least 75% of each session to get CPECS® credits.

A board with a specific QR code will be placed inside each conference room.

Each delegate interested in getting the CPECS® credits must scan the QR code at the entrance and at the exit of the room for every session. In order to scan the QR code the delegate has to use the dedicated Congress APP where a section will be entirely dedicated to the CPECS program.

Once the congress is over, only delegates with 75% of attendance will receive a specific email with the evaluation questionnaire for the sessions they attended.

At the end of the whole process, they will automatically receive the CPECS® certificate.

At the end of the Congress, in order to get SCFHS CME credits, **please send your request to SSCC email info.sccc.sa@gmail.com** and send a scanned copy of your certificate of attendance, together with your SCFHS registration number. Requests must be sent within 6th June at the latest.

SUNDAY 26 MAY 2024

Opening Ceremony

17:00-19:00 ROOM E

Welcome addresses
IFCC and Congress President, T. Ozben
Chairs of the Organizing Committee, K. Adeli, A. Borai
AFCB President, C. Haddad
SSCC President, S.H. Sobki
UAE GDA Chairperson, M. Matar

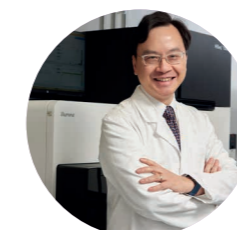
IFCC Awards announced by T. Ozben

Opening Lecture

Chair: T. Ozben (Turkey)

Pushing forward the frontier of cfDNA diagnostics

Dennis Lo (Hong Kong, China)



Professor Dennis Lo is the Li Ka Shing Professor of Medicine of The Chinese University of Hong Kong (CUHK)

His research interests focus on the biology and diagnostic applications of cell-free nucleic acids in plasma. In particular, he discovered the presence of cell-free fetal DNA in maternal plasma in 1997 and has since then been pioneering non-invasive prenatal diagnosis using this technology. This technology has been adopted globally and has created a paradigm in prenatal medicine. He has also made many innovations using circulating nucleic acids for cancer detection, including the screening of early stage nasopharyngeal cancer. In recognition of his research, Professor Lo has been elected as Fellow of the Royal Society, Foreign Associate of the US National Academy of Sciences, Fellow of The World Academy of Sciences (TWAS) and Founding Member of the Academy of Sciences of Hong Kong. Professor Lo has won numerous awards, including the 2014 King Faisal International Prize in Medicine, the 2016 Future Science Prize in Life Science, the 2019 Fudan-Zhongzhi Science Award, the 2021 Breakthrough Prize in Life Sciences, the 2021 Royal Medal, the 2021 ESHG Mendel Award, the 2022 ISPD Pioneer Award and the 2022 Lasker-DeBakey Clinical Medical Research Award.

MONDAY 27 MAY 2024

IFCC SYMPOSIUM 1



09:00-11:00 ROOM E

PRESENT AND FUTURE OF CHRONIC KIDNEY DISEASE AND ACUTE KIDNEY INJURY DETECTION

Chairs: Joe M. El-Khoury, Rajeevan Selvaratnam

Updates on new eGFR equations and acute kidney injury definitions, *Joe M. El-Khoury*
 An update on albuminuria as a chronic kidney disease marker, *Joris Delanghe*
 Everything is acute until it becomes chronic – biomarkers of kidney injury, *Rajeevan Selvaratnam*
 Using machine learning methods and leveraging electronic health records for acute kidney injury detection and management, *Lama Ghazi*

Credits: 2 CPECS®



Joe M. El-Khoury
(USA)



Rajeevan Selvaratnam
(Canada)



Joris Delanghe
(Belgium)



Lama Ghazi
(UK)

SYMPOSIUM 1

09:00-11:00 ROOM A

THE PROMISE OF - OMICS BIOMARKERS

Chairs: Hans Jacobs, Sergio Bernardini

Glycomics and glycoproteomics: a new biomarker domain debuts in translational research, *Manfred Wuhrer*
 Dynamic monitoring of myeloma minimal residual disease with targeted mass spectrometry, *Hans Jacobs*
 Integration of artificial intelligence and plasma steroidomics with Laboratory Information Management Systems: application to primary aldosteronism, *Graeme Eisenhofer*
 Generative AI as a catalyst for precision medicine research: bridging potential with reality, *Zeina Al-Mahayri*
 Deciphering Biological Impact of Nitrous Oxide Abuse: Insights from Targeted Metabolomics Analysis
Emeline Gernez, Guillaume Grzych

Credits: 2 CPECS®



Hans Jacobs
(the Netherlands)



Sergio Bernardini
(Italy)



Manfred Wuhrer (the Netherlands)



Graeme Eisenhofer
(Germany)



Zeina Al-Mahayri (Syria)



Emeline Gernez
(France)



Guillaume Grzych
(France)

SYMPOSIUM 2

09:00-11:00 ROOM ABU DHABI B

APTAMERS BASED DIAGNOSTIC FOR BIOMEDICAL APPLICATIONS

Chairs: Mohammed Zourob, Rajiv T. Erasmus

Development of diagnostics for SARS-CoV-2 with high-affinity DNA aptamers, *Yingfu Li*
 Continuous, real-time drug measurements in situ in the living body, *Kevin Plaxco*
 Development of rapid and low-cost aptameric biosensors for biomedical applications, *Mohammed Zourob*
 Aptamer-based label-free electrochemical biosensors for the diagnosis of sickle cell anemia, *Wjdan Arishi*
 Molecular mouse gram-negative resistance cartridges are a valid option for rapid antibiotic resistance detection in blood culture bottles, *Veronica Seija*

Credits: 2 CPECS®



Mohammed Zourob
(Saudi Arabia),



Rajiv T. Erasmus
(South Africa)



Yingfu Li
(Canada)



Kevin Plaxco
(USA)



Wjdan Arishi
(Saudi Arabia)



Veronica Seija
(Uruguay)

AFCB SYMPOSIUM 1

09:00-11:00 ROOM C

METABOLIC DISEASES IN ARABIC COUNTRIES

Chairs: Myrna Germanos, Adnan Alkhatib



Rare genetic diseases in the MENA region, *Andre Megarbane*
 Inborn errors of immunity in highly consanguineous populations: from diagnosis to intervention, *Mohamed Ridha Barbouche*
 Epidemiology of the lysosomal storage disorders (LSDs) IN NORTH Africa, *Layachi Chabraoui*
 Overweight and Obesity: the Weight of Genes, *Mohamed Makrelouf*

Credits: 2 CPECS®



Myrna Germanos
(Lebanon)



Adnan Alkhatib
(Syria)



Andre Megarbane
(Lebanon)



Mohamed Ridha Barbouche
(Bahrain)



Layachi Chabraoui
(Morocco)



Mohamed Makrelouf
(Algeria)



WASPaLM SESSION

09:00-11:00 ROOM D

THE ROLE OF CLINICAL LABORATORY IN THE DEVELOPMENT OF NEW DRUGS

Chairs: Roberto Verna, Veronica Seija

The Laboratory in Clinical Research, *Roberto Verna*

The Role of Microbiota in Human Health, *Luigina Romani*

Revolutionizing Antibiotic Strategies: The Power of Innovative Technologies, *Veronica Seija*



Credits: 2 CPECS®



Roberto Verna
(Italy)



Veronica Seija
(Uruguay)



Luigina Romani
(Italy)



EFLM SESSION

09:00-11:00 ROOM B

GREEN LABS. IMPLEMENTING SUSTAINABLE PRACTICES IN MEDICAL LABORATORIES

Chairs: Tomris Ozben, Snezana Jovicic

Green labs: Implementing sustainable practices in medical laboratories, *Tomris Ozben*

Striking the Right Balance: Sustainability and Innovation, *Ffion Jackson*

Strategies for energy conservation and sustainability, *Snezana Jovicic*

Waste management for clinical laboratories, *Alistair Gammie*

Credits: 2 CPECS®



Tomris Ozben
(Turkey)



Snezana Jovicic
(Serbia)



Ffion Jackson
(UK)



Alistair Gammie
(UK)

09:00 - 09:15 ROOM F

Opening Message

Mariam Almheiri (UAE)

UAEGDA SESSION

LONGEVITY: DIET & SMART AGING I

Chairs: Mishkat Shehata, Jaffer Khan, Maryam Matar

09:15 - 09:30 Mediterranean diet & the prevention of cardiovascular disease, *Samia Mora*

09:30 - 09:45 Glycans are modifiable biomarkers and functional effectors of age-related diseases
Gordon Lauc

09:45 - 10:00 Healthy Longevity Medicine: Restoring and maintaining biological age of optimal performance, *Evelyne Bischof*

10:00 - 10:15 The role of membrane lipidome in lifespan: why dietary lipids can impact on longevity
Vincenzo Di Donna

10:15 - 10:30 Novel strategies to delay brain aging and cognitive decline, *David Vazour*

Credits: 1 CPECS®



Mishkat Shehata
(UAE)



Jaffer Khan
(UAE)



Maryam Matar
(UAE)



Samia Mora
(USA)



Gordon Lauc
(UK)



Evelyne Bischof
(Switzerland)



Vincenzo Di Donna
(UAE)



David Vazour
(UK)

UAEGDA SESSION

LONGEVITY: DIET & SMART AGING II

Chairs: Mishkat Shehata, Jaffer Khan, Maryam Matar

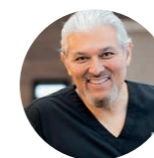
10:30 - 10:45 Fasting: The Fountain of Youth? *Mussaad Al-Razouki*

10:45 - 11:00 Why Longevity Fails – Invisible toxic Exposures, *Andrew Jeremijenko*

Credits: 0,5 CPECS®



Mishkat Shehata
(UAE)



Jaffer Khan
(UAE)



Maryam Matar
(UAE)



Mussaad Al-Razouki
(Kuwait)



Andrew Jeremijenko
(UAE)



Plenary Lecture

11:30-12:30 ROOM E

Chair: Khosrow Adeli (Canada)

Precision, Prevention and Women's Cardiovascular Health: A Global Perspective

Samia Mora (USA)



Dr. Samia Mora

Dr. Mora is a cardiologist and molecular epidemiologist conducting translational research in the prevention of cardiometabolic disease. She is Professor of Medicine at Harvard Medical School, the Director of the Center for Lipid Metabolomics and Director of the Biorepository, Divisions of Preventive and Cardiovascular Medicine, Brigham and Women's Hospital. She received her undergraduate degree from Harvard University, and her medical degree from Harvard Medical School. Dr. Mora completed an internal medicine residency at Massachusetts General Hospital and cardiovascular disease fellowship at Johns Hopkins Hospital, where she also obtained an MHS degree (Epidemiology) from the Johns Hopkins Bloomberg School of Public Health. Dr. Mora is board certified in cardiovascular disease and echocardiography, and serves on the Editorial Boards of JAMA Internal Medicine and Atherosclerosis. She is an Elected Member of the American Society for Clinical Investigation and the Association of University Cardiologists.

Credits: 1 CPECS®

12:30 - 13:00 POSTER SESSION + LUNCH

UAEGDA SESSION

13.00 - 14.00 ROOM F

WORKSHOP GENETICS FOR NON-GENETISTS

History & Basic of Genetics, *Lova Matsa*

DNA Methylation Markers and Cervical Cancer, *Mohammed Mezaal*



Lova Matsa (UAE)



Mohammed Mezaal (UAE)



UAEGDA SESSION

14.00 - 16.00 ROOM F

GENOMICS & MICROBIOME DISCOVERIES

Chairs: Luis Saraiva, Ahmed AlHammadi, Azzam Kayasseh

- 14:00 - 14:30 The Progress of Gene Therapy in Hemoglobinopathy - Insights from First-Hand Clinical Data, *Chao Liu*
- 14:30 - 15:00 Enhancing Longevity: Unveiling the Impact of the Gut Microbiome, *Alla Zaentc*
- 15:00 - 15:30 Understanding the microbiome in rare genetic disorders - Lessons from Very Early Onset inflammatory bowel disease, *Souhaila Al Khodor*
- 15:30 - 16:00 Investigating microbiome dysbiosis and species interactions within colonies under diseased conditions employing systems biology approaches. *Mohammad Tauqeer Alam*

Credits: 2 CPECS®



Luis Saraiva



Ahmed AlHammadi (UAE)



Azzam Kayasseh (UAE)



Chao Liu



Alla Zaentc (UAE)



Souhaila Al Khodor (Qatar)



Mohammad Tauqeer Alam (UAE)





UAEGDA SESSION



16:15 - 17:00 ROOM F

PANEL DISCUSSION - LONGEVITY & SMART AGING

Chairs: Evelyne Bishof, Mussaad Al-Razouki, Saba Habibollah

16:15 - 17:00 Panel discussion

David Vauzour, Jaffer Khan, Andrew Jeremijenko, Andrew McCombe, Mishkat Shehata

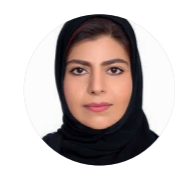
Credits: 0,5 CPECS®



Evelyne Bishof (Switzerland)



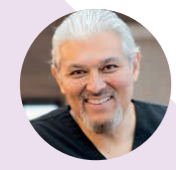
Mussaad Al-Razouki (UAE)



Saba Habibollah (UAE)



David Vauzour (UK)



Jaffer Khan (UAE)



Andrew Jeremijenko (UAE)



Andrew McCombe (UAE)



Mishkat Shehata (UAE)

IFCC SYMPOSIUM 2

14:30-16:30 ROOM E

FLOWCYTOMETRY PRINCIPLES AND ITS ROLES IN PRECISION MEDICINE

Chairs: Claude Lambert, Heba Raslan

Principle of flow cytometry and issues in diagnosis, *Claude Lambert*

FCM in characterizing Lymphoproliferative disorders, *Mohamed Brahimi*

FCM in diagnosis of immunological disorders and biotherapies, *Najla Mekki*

FCM in characterizing acute leukemic disorders, *Heba Raslan*

Credits: 2 CPECS®



Claude Lambert (France)



Heba Raslan (Saudi Arabia)



Mohamed Brahimi (Algeria)



Najla Mekki (Tunisia)

SYMPOSIUM 3

14:30-16:30 ROOM D

THOUGHTS ON MAINTAINING INNOVATION AND AVAILABILITY OF MEDICAL TESTS OR HOW TO MEET REGULATORY CHALLENGES FOR LAB-DEVELOPED-TESTS

Chairs: Michael Neumaier, Alexander Haliassos

Regulatory considerations for Laboratory-Developed Tests from an international perspective: Opportunities and risks for patient care, *Folker Spitzenberger*

Impact of diagnostic regulations on laboratory developed tests in the US, *Tina Lockwood*

Off-label Diagnostics - an analogy to individualized therapeutic medicine: the oncology case
Michael Neumaier, Ralf Hofheinz

Laboratory medicine and integrated diagnostics: the role of information technology, *Mario Plebani*

Credits: 2 CPECS®



Michael Neumaier (Germany)



Alexander Haliassos (Greece)



Folker Spitzenberger (Germany)



Tina Lockwood (USA)



Ralf Hofheinz (Germany)



Mario Plebani (Italy)

Lunch Workshop 2

13.00 - 14.00 ROOM C

Convergence of Clinical Diagnostics and Population Health.

Evolving to Clinical Lab 2.0, from Business of Volume to Business of Value.

CHAIR: *Els Melis*

SPEAKER: **Khosrow R. Shotorbani, MBA, MT (ASCP)**

PROGRAMME

13.00-13.05: Chair: Welcome and Introduction of the topic and speaker

13.05-13.40: Speaker: Reshaping together how healthcare is delivered.

Evolving the lab from volume to value-based testing.

13.40-14.55: All: Q&A

13.55-14.00: Chair: Close

Learning Objectives:

- Inspire Laboratory Professionals about the future role of the Clinical Laboratory through amplification of actionable insights. The value of the lab doesn't end when we release a result, rather, that's where it begins.
- Create a disruptive value paradigm and explore alternative business models that expand the role of diagnostic services in the future healthcare ecosystem.
- Provide a potential platform with specific examples about the convergence of diagnostics and population health.

Background on the topic:

- The role of clinical diagnostics in the sustainable healthcare future state is crucial. As the healthcare moves from volume to value, our healthcare systems require the information to predict and monitor to proactively manage and mitigate clinical risk.
- The longitudinal clinical lab data are essential ingredients to proactively risk stratify the population in preparation to value-based care.
- This is the role of Clinical Lab 2.0!



Educational Workshop 1

14.30 - 17.00 ROOM A

Insights on the Laboratory Medicine

CHAIR 1: *Prof. Dalius Vitkus*

SPEAKER 1: **Prof. Tomris Ozben**

SPEAKER 2: **Dr. Endang Hoyaranda**

SPEAKER 3: **Dr. Annette L. Salillas**

SPEAKER 4: **Dr. Barnali Das**

CHAIR 2: *Dr. Hassan Bayat*

SPEAKER 5: **Prof. Khosrow Adeli**

SPEAKER 6: **Prof. Tiago Guimaraes**

SPEAKER 7: **Prof. Tatiana Vavilova**

PROGRAMME:

SESSION 1 - 14:30 - 15:50

Moderator - Prof. Dalius Vitkus

14:30-14:50 Integrated Diagnostics: Evidence-based Therapy Guidance in Oncology from Tumor Markers to Immunohistochemistry, Molecular Testing, Liquid Biopsy and Imaging - Prof. Tomris Ozben

14:50-15:10 The Medical Laboratory Supporting ESG - Dr. Endang Hoyaranda

15:10-15:30 Autoimmune Markers of Thyroid Diseases - An Update - Dr. Annette L. Salillas

15:30-15:50 Defining, Establishing and Verifying Population Specific Reference Interval: Key to Harmonization - Dr. Barnali Das

SESSION 2 - 15:50-17:00

Moderator - Dr. Hassan Bayat

15:50-16:10 Laboratory Biomarkers in Autoimmune Disease Diagnosis and Monitoring - Prof. Khosrow Adeli

16:10-16:30 What Vitamin D should We Measure? - Prof. Tiago Guimaraes

16:30-16:50 Laboratory Markers of Hemostasis Pathology for Cardiological Problems - Prof. Tatiana Vavilova
Q&A

Learning Objectives:

- Tumor Markers in the Current and Future Clinical Practice
- Methods to measure tumor markers and limitations of tumor marker tests
- Improvement of diagnostic performance of tumor markers
- Diagnosis of cancers based on tumor markers only
- Integration of tumor markers with other diagnostic modalities such as immunohistochemistry, molecular testing, liquid profiling, imaging.
- Understand definition and content of ESG and know how ESG affect medical laboratories
- Overview thyroid physiology & the common thyroid dysfunctions
- Define prevalence & clinical significance of autoimmune disorders
- Recognize the repertoire of laboratory techniques for autoimmunity assessment
- Integrate knowledge of various laboratory tests within the context of autoimmune disease workup.
- Learn new pediatric reference limits developed for autoimmune biomarkers.
- To know different markers related to hemostasis pathology and cardiovascular disorders



Educational Workshop 2

14.30 - 15.30 ROOM C

Empowering Healthcare: Unveiling Strategic Approaches in Clinical Laboratory Medicine for Enhanced Diagnoses, Treatment, and Outcomes

CHAIR: *Eliana Valle, M.D., M.B.A.*

SPEAKER 1: **Dr. David Grenache, PhD**

SPEAKER 2: **Professor Philip Newsome PhD, FRCPE**

PROGRAMME:

Time to Shine: An Era of health and wellness driven via the clinical laboratory (20 min.)
Dr David Grenache

Improving health and financial outcomes through valued implementation of a novel and enhanced intelligent liver function testing (iLFT) pathway. (20 min.)
Prof Philip Newsome

Q&A (20 min)

Learning Objectives:

- Highlight key attributes of high-performing clinical laboratories that are achieving measurable better healthcare.
- Appreciate the importance and use of clinical decision support in uncovering new insights while standardizing and maximizing novel care pathways.
- Understand how to begin maximizing laboratory medicine for improved health and financial outcomes.

Educational Workshop 4

14.30 - 15.30 ROOM B

Simpler, Smarter Solutions: Waters Total LC-MS/MS Workflow

SPEAKER 1: Godo BOSCH

SPEAKER 2: Stephen BALLOCH

PROGRAMME:

Why LC/MS is becoming essential in the Diagnostic Laboratory (25 min)

Recent developments to simplify and improve efficiency of the workflow for complex and emerging applications. (35 min)

Includes time for Questions and Answers

Learning Objectives:

The ever-growing use of mass spectrometry (MS) in clinical diagnostics has resulted in the introduction of numerous methods information rich with high sensitivity and unrivalled specificity. Numerous disease areas have benefited enormously from clinical MS development. MS methods are becoming routine and are preferred techniques in many clinical laboratories for specific patient cohorts.

This session is aimed at giving insights into different MS applications that help to resolve challenging analytical demands for specific patient cohorts and how this can support diagnostics, monitoring and eventually, disease prevention.

Examples in routine work such as Endocrinology and Therapeutic Drug Monitoring assays will support the discussion and highlight the versatility of the technology to cope with small molecules as well as large biomolecules.



Innovation based on your needs

Creating the future of labs

Improve your efficiency and competitiveness with the help of the pioneer in integration of laboratory solutions, setting new standards in the evolution of future diagnostics.

Explore the past, present and future of diagnostic innovation at the Roche booth (#47) during IFCC WorldLab 2024

<https://diagnostics.roche.com/>



Scan code for more information



TUESDAY 28 MAY 2024



IFCC SYMPOSIUM 3

09:00-11:00 ROOM E

THE POTENTIAL OF SINGLE CELL AND SPATIAL BIOLOGY IN THE EVOLUTION OF CLINICAL MEDICINE

Chairs: Andrew South, Paolo Fortina

The potential of single cell and spatial biology for clinical medicine, *Paolo Fortina*
 Using single-cell RNA-sequencing to interrogate biologic drug response in psoriasis, *Raymond Cho*
 Determining the mechanism of action of cancer therapeutics through single cell profiling, *Andrew South*
 Understanding chronic wounds and wound healing using single cell profiling, *Ignacia Fuentes*

Credits: 2 CPECS®



Andrew South
(USA)



Paolo Fortina
(USA)



Raymond Cho
(USA)



Ignacia Fuentes
(Chile)

SYMPOSIUM 4

09:00-11:00 ROOM A

THE ROLE OF LABORATORY MEDICINE IN DIRECT-TO-CONSUMER TESTING (DTCT)

Chairs: Sverre Sandberg, Matthias Orth

What is Direct To Consumer Testing, DTCT and is it compatible with the "choose wisely" campaign?
Sverre Sandberg
 The variety and range of direct-to-consumer testing, *Patti Shih*
 We must speak up – what is the role of laboratory medicine in DTCT?, *Matthias Orth*
 How to compare point-of-care testing results with hospital laboratory results: recommendations for primary healthcare laboratories, *Anne Stavelin*
 Dutch Multicenter Study: Point-of-Care Test for CT Lesion Prediction in Mild Traumatic Brain Injury using GFAP and UCH-L1, *Walid Chayoua*

Credits: 2 CPECS®



Sverre Sandberg
(Norway)



Matthias Orth
(Germany)



Patti Shih
(Australia)



Anne Stavelin
(Norway)



Walid Chayoua
(the Netherlands)

SSCC SYMPOSIUM 1

09:00-11:00 ROOM B

INBORN ERRORS OF METABOLISM IN SAUDI ARABIA

Chairs: Ali Alothaim, Khalid Al Harbi

Novel inborn errors of metabolism discovery in Saudi Arabia, *Majid Alfadhel*
 Landscape of Mitochondrial disorders in Saudi Arabia, *Naif Almontashiri*
 Overview of Newborn screening program in Saudi Arabia, *Fuad Almutairi*
 Integrates genomic and Metabolomics technologies to unravel the diagnostic odyssey in rare diseases
Malak Alghamdi

Credits: 2 CPECS®



Ali Alothaim
(Saudi Arabia)



Khalid Al Harbi
(Saudi Arabia)



Majid Alfadhel
(Saudi Arabia)



Naif Almontashiri
(Saudi Arabia)



Fuad Almutairi
(Saudi Arabia)



Malak Alghamdi
(Saudi Arabia)

SYMPOSIUM 5

09:00-11:00 ROOM C

MACHINE LEARNING AND CLINICAL DECISION SUPPORT: TECHNOLOGIES THAT GENUINELY MAKE PEOPLE'S LIFE BETTER

Chairs: Hernán Fares Taie, Waleed Al Tamimi

Clinical decision support and Machine Learning: Improving medical decisions and enhancing the value of the clinical laboratory in healthcare, *Hernán Fares Taie*
 Navigating Through Current ML Applications in Clinical Labs: From Preanalytical to Post-analytical Phases
Deniz Ilhan Topcu
 Machine Learning in healthcare: Current applications and future perspectives, *Stephen Master*
 Artificial intelligence (AI)-driven clinical decision support to predict urine culture outcome, *Lieselot Dedeene*
 Tackling the implementation hurdle: user-centric validation of a machine-learning decision support tool for the screening of mild bleeding disorders, *Henning Nilius*

Credits: 2 CPECS®



Hernán Fares Taie
(Argentina)



Waleed Al Tamimi
(Saudi Arabia)



Deniz Ilhan Topcu
(Turkey)



Stephen Master
(USA)



Lieselot Dedeene
(Belgium)



Henning Nilius
(Switzerland)

UAE SYMPOSIUM 1

09:00-11:00 ROOM ABU DHABI B METABOLIC AND NONCOMMUNICABLE DISEASES

Chairs: Fayha Salah Ahmed, Abdelhalim Chachou

UAE cardiometabolic guidelines, *Hani Sabbour*
The burden of Non-alcoholic fatty liver disease: screening, diagnosis and management, *Fayha Salah Ahmed*
Diabetes in UAE, *Riad Bayoumi*
Markers of Alzheimer and neurological disorders, *Laila AbdelWareth*

Credits: 2 CPECS®



Fayha Salah Ahmed
(UAE)



Abdelhalim Chachou
(Algeria)



Hani Sabbour
(UAE)



Riad Bayoumi
(UAE)



Laila AbdelWareth
(UAE)



APFCB SESSION

09:00-11:00 ROOM D CLINICAL DECISION SUPPORT

Chairs: Kay Weng Choy, Tze Ping Loh

Clinical decision support in clinical practice: a systematic review, *Adriana Esho*
Electronic clinical decision support for pathology requesting, *Ken Sikaris*
Automated intelligent validation and verification of results, *Wei Cui*
Considerations for result interpretation clinical decision support, *Tze Ping Loh*

Credits: 2 CPECS®



Kay Weng Choy
(Australia)



Tze Ping Loh
(Singapore)



Adriana Esho
(Australia)



Ken Sikaris
(Australia)



Wei Cui
(China)

09:00 - 09:15 ROOM F Opening message Tomris Ozben (Turkey)

UAEGDA SESSION

STEM CELLS & REGENERATIVE MEDICINE

Chairs: Sfoug AlShammary, Yahya Kiwan, Fatima Jamali

- 09:15 - 09:30 Development of myocardial regenerative medicine for severe heart failure
Yoshiki Sawa
- 09:30 - 09:45 Corneal stem cell therapies: from lab to clinic, *Sujjad Ahmad*
- 09:45 - 10:00 Towards a better Understanding of Diabetes-Associated Gene Function through iPSC-Derived Islet Organoids, *Essam Abdelalim*
- 10:00 - 10:15 Apolipoproteins Have a Major Role in Cellular Tumor Dormancy in Triple Negative Breast Cancer: In-silico Study, *Shimaa Elshenawy*

Credits: 1 CPECS®



Sfoug AlShammary
(UAE)



Yahya Kiwan
(UAE)



Fatima Jamali
(UAE)



Yoshiki Sawa
(Japan)



Sujjad Ahmad
(UK)



Essam Abdelalim
(Qatar)



Shimaa Elshenawy
(Egypt)



UAEGDA SESSION

ADVANCING CANCER CARE

Chairs: Burhan Fakhurji, Thomas Adrian, Mahmood Yaseen Hachim Al Mashhadani

- 10:20 - 10:35 Towards eliminating minimal residual disease in ovarian cancer to prevent recurrence
Ahmed Ashour Ahmed
- 10:35 - 10:50 AI in Cancer: Pathology Applications, *Aaron Han*
- 10:50 - 11:05 Epigenetics and Cancer, *Ali Hamiche*
- 11:05 - 11:20 Plasminogen Activator Inhibitor 1: Bridging Bench and Clinic in Cancer Research
Khalid Bajou

Credits: 1 CPECS®



Burhan Fakhurji
(Saudi Arabia)



Thomas Adrian
(UAE)



Mahmood Yaseen Hachim Al Mashhadani
(UAE)



Ahmed Ashour Ahmed
(UK)



Aaron Han
(UAE)



Ali Hamiche
(France)



Khalid Bajou
(UAE)



Plenary Lecture

11:30-12:30 **ROOM E**

Chair: Maurizio Ferrari (Italy)
Genomics in the Middle East: A report card
Fowzan Sami Alkuraya (Saudi Arabia)



Fowzan S Alkuraya

Fowzan S Alkuraya is a Professor of Human Genetics at Alfaisal University and the Chairman of the Department of Translational Genomics at King Faisal Specialist Hospital and Research Center. He joined medical school (King Saud University) before turning 15 and graduated first in his class with first class honor. He did his pediatric residency at Georgetown University Hospital, followed by a fellowship in clinical genetics and another in molecular genetics at Harvard Medical School. He also did a postdoctoral research fellowship in the area of developmental genetics in the lab of Prof. Richard Maas at Harvard Medical School. He returned to his native Saudi Arabia to establish the Developmental Genetics Lab, which later evolved into the Center for Genomic Medicine at KFSHRC. He is an authority in the area of Mendelian genetics with more than 520 published manuscripts that describe his lab's discovery of hundreds of novel disease genes in humans as well as many other seminal contributions to the field of human genetics as featured in profiles published by The Lancet and Science. He is a frequently invited speaker at local, regional and international conferences, on the editorial board of prominent human genetics journals, and the recipient of numerous prestigious awards including William King Bowes Award in Medical Genetics (first non-US based winner), King Salman Award for Disability Research and Curt Stern Award (first non-US based winner).

Credits: 1 CPECS®

UAEGDA SESSION

13.00 - 14.00 **ROOM F**
WORKSHOP GENETICS FOR NON-GENETISTS

Pharmacogenomics, *Saba Habibollah*
 Molecular Genetic Tools & Technology, *Burhan Fakhurji*



Saba Habibollah
(UAE)



Burhan Fakhurji
(Saudi Arabia)

UAEGDA SESSION

14.00 - 16.00 **ROOM F**
LEADING PRECISION THERAPIES

Chairs: Tomris Ozben, Aaron Han, Rachel Stratton

- 14:00 - 14:30 Unlocking the Potential of "Body on a Chip" to recapitulate Living Systems in vitro
Ken-ichiro Kamei
- 14:30 - 15:00 Pharmacogenetics and its application to clinical daily life, *Andrea Griesmacher*
- 15:00 - 15:30 Exploring Pharmacogenomics in the Middle East: Opportunities and Challenges
Mohammed Alsbou
- 15:30 - 16:00 Advances in Bone Marrow Transplant, *Shahrukh Hashmi*

Credits: 2 CPECS®



Tomris Ozben
(Turkey)



Aaron Han
(UAE)



Rachel Stratton
(UAE)



Ken-ichiro Kamei
(UAE)



Andrea Griesmacher
(Austria)



Mohammed Alsbou
(UAE)



Shahrukh Hashmi
(UAE)





UAEGDA SESSION



16:15 - 17:00 ROOM F

PANEL DISCUSSION - STEM CELLS & REGENERATIVE MEDICINE

Chairs: Emmanouil Nikolousis, Fatima Jamali, Shaikha Almazrouei

16:15 - 17:00 Panel Discussion

Sujjad Ahmad, Geppino Falco, Rifat Hamoudi, Essam Abdelalim

Credits: 0,5 CPECS®



Emmanouil Nikolousis (UAE)



Fatima Jamali (UAE)



Shaikha Almazrouei (UAE)



Sujjad Ahmad (UK)



Geppino Falco (Italy)



Rifat Hamoudi (UAE)



Essam Abdelalim (UAE)

IFCC SYMPOSIUM 4

14:30-16:30 ROOM E

ON THE WAY TO CARDIOVASCULAR PRECISION DIAGNOSTICS

Chairs: Tony Badrick, Patrick Bossuyt

Urgent need for Cardiovascular Precision Diagnostics to address Residual Cardiovascular Risk.

Christa M. Cobbaert

Establishing an SI-traceable Reference Measurement System for 7 Serum Apolipoproteins, *Renee Ruhaak*

Evaluating the Clinical Effectiveness of Cardiovascular Precision Diagnostics, *Patrick Bossuyt*

Demonstrating the clinical value of a multiplexed serum Apolipoprotein Panel in the Odyssey Outcome Study, *Esther Reijnders*

Credits: 2 CPECS®



Tony Badrick (Australia)



Patrick Bossuyt (the Netherlands)



Christa M. Cobbaert (the Netherlands)



Renee Ruhaak (the Netherlands)



Esther Reijnders (the Netherlands)

SYMPOSIUM 6

14:30-16:30 ROOM ABU DHABI B

DIGITAL COMPETENCE AND ARTIFICIAL INTELLIGENCE IN LABORATORY MEDICINE

Chairs: Damien Gruson, Santiago Fares Taie

Embracing the Digital Frontier: Unveiling Unmet Needs in Laboratory Medicine's AI Journey, *Andrea Padoan*

Revolutionizing Diagnostics: The Clinical Value of Artificial Intelligence in Laboratory Medicine, *Damien Gruson*

Efficiency Amplified: Unleashing Operational Benefits through Digital Competence and AI in Laboratory Medicine, *Shaikha Almazrouei*

Harnessing GPT-4 turbo for intelligent laboratory test recommendations : a step forward in next-generation clinical decision support, *Ahmed Zayed*

Leveraging Machine Learning to Improve Current Diagnostic Algorithms and Laboratory Stewardship *He Sarina Yang*

Credits: 2 CPECS®



Damien Gruson (Belgium)



Santiago Fares Taie (Argentina)



Andrea Padoan (Italy)



Shaikha Almazrouei (UAE)



Ahmed Zayed (Belgium)



He Sarina Yang (USA)

Lunch Workshop 8

13.00 - 14.00 ROOM B

Managing the blood sampling volumes: why, who and how?

CHAIR: Ana-Maria Šimundić (HR)

SPEAKER 1: Mario Plebani (IT)

SPEAKER 2: Álvaro González (SP)

PROGRAMME:

13.00/13.25 - Speaker Mario Plebani (IT)

Title: The role of laboratory in managing the blood sampling volumes

13.25/13.50 - Speaker Álvaro González (SP)

Title: Capillary blood sampling – do's and don't's

13.50/14.00 - Discussion and Q&A

Learning Objectives:

- To understand which processes lead to excessive and unnecessary blood loss in a patient
- To understand the impact and ethical issues of excessive and unnecessary blood loss
- To be able to identify measures which laboratories may apply to mitigate the unnecessary blood loss
- To understand the difference between capillary and venous blood sample
- To identify possible sources of bias associated with capillary blood collection and how to mitigate these risks

Educational Workshop 9

14.30 - 17.00 ROOM A

Updates on Standardization and Harmonization in Immunoassays

CHAIR 1: Dr. Pilar Fernandez-Calle

SPEAKER 1: Prof. Mario Plebani

SPEAKER 2: Prof. Tomas Zima

SPEAKER 3: Prof. Waleed Tamimi

SPEAKER 4: Prof. Andrey Ivanov

CHAIR 2: Dr. Eduardo Freggiaro

SPEAKER 5: Prof. Etienne Cavalier

SPEAKER 6: Dr. Carlos Garces

SPEAKER 7: Dr. Andrei Komarov

PROGRAMME:

SESSION 1 - 14:30-15:50

Chair - Dr. Pilar Fernandez-Calle

14:30-14:50 Standardization and Harmonization in Immunoassays: Quality and Comparability Are Needed - Prof. Mario Plebani

14:50-15:10 Tumor Markers Focused on Gastric Area - Prof. Tomas Zima

15:10-15:30 Evaluation of PIVKA II Assay in Patients with Liver Diseases - Prof. Waleed Tamimi

15:30-15:50 Fundamental Scientific Research is a Source of New Opportunities for Laboratory Medicine - Prof. Andrey Ivanov

SESSION TWO 15:50-17:00

Chair - Dr. Eduardo Freggiaro

15:50-16:10 Update on 25-OH Vitamin D Measurement and Metabolites - Prof. Etienne Cavalier

16:10-16:30 ESG for Medical Laboratories, How to Implement from Theory to Practice - Dr. Carlos Garces

16:30-16:50 Ways of Automising Laboratory Performance in the Context of Robotechnics' Development - Dr. Andrei Komarov

Learning Objectives:

- To understand the increasing importance of data comparability in laboratory medicine
- To understand the differences between standardization and harmonization in laboratory medicine
- To understand differences between clinical chemistry measurands and serology/immunoassay
- To understand the further steps in standardization and harmonization in the total testing cycle
- Understand methods to measure tumor markers
- Interpret concentrations of tumor markers in various gastric disorders
- To know the background and clinical applications of PIVKA-II
- Briefly know the evaluation and comparison results of different PIVKA-II assays
- Understand the different metabolite pathways of vitamin D
- Interpret vitamin D concentrations in different clinical contexts

Educational Workshop 10

14.30 - 15.30 ROOM C

New Perspectives for the Utility of Big Data Analysis to Derive Reference Intervals Using Indirect Methodology

CHAIR: Dr. Jakob Zierk

SPEAKER 1: Prof. Anwar Borai

SPEAKER 2: Prof. Khosrow Adeli

SPEAKER 3: Prof. Kiyoshi Ichihara

PROGRAMME:

Why Should We Establish Reference Intervals For Each Population? Saudi Population Study as An Example (20 min.) - Prof. Anwar Borai

Big Data Analytics to Harmonize Reference Intervals Across Populations and Analytical Platforms (20 min.) - Prof. Khosrow Adeli

"Critical assessments of reference intervals derived indirectly from laboratory database" (20 min.) - Prof. Kiyoshi Ichihara

Learning Objectives:

- To show how clinical decisions can be affected by the obtained reference intervals (RIs) using the established RIs on Saudi population as an example.
- Define application of big data analytics to determination of indirect RIs and to achieve harmonization across clinical laboratories.
- To show different schemes of data-cleaning for indirectly derived RIs and validate their accuracy in comparison to RIs obtained by direct method.

Educational Workshop 11

14.30 - 15.30 ROOM D

Cardiovascular Disease: From Laboratory Diagnosis to Challenges

CHAIR: Prof Tomris Ozben

SPEAKER 1: Prof. Sergio Bernardini

SPEAKER 2: Dr. Fadwa Said Abdelazim

PROGRAMME:

14:30 -14:35 Welcome and Introduction - Tomris Ozben

14:35 -14:55 Laboratory Test for Cardiovascular Disease - Fadwa Said Abdelazim

14:55 -15:25 Cardiovascular risk stratification: a fundamental challenge for laboratory medicine - Sergio Bernardini

15:25-15:30 Discussion

Learning Objectives:

- Analyze the existing practices of laboratory medicine in CVD treatment, including the challenges and prospects involved.
- Understand the significance of the Hs-cTnI test, when paired with clinical and diagnostic findings, in determining the risk of future cardiac episodes in a population perceived as healthy
- Understand how addition of hs-cTnI into risk assessment algorithms can support appropriate management and treatment

Educational Workshop 12

14.30 - 15.30 ROOM B

Fecal Calprotectin: A Biomarker for Gastrointestinal Inflammation in IBD - Clinical Insights and Efficient Laboratory Workflow

CHAIR: Christian-Benedikt Gerhold, PhD

SPEAKER 1: Alexander Ohmann, PhD

SPEAKER 2: Prof. Jordi Guardiola

SPEAKER 3: Mrs Rouba Trad

PROGRAMME:

14.30 Calprotectin: Insights into biological function & biochemical analysis – Alexander Ohmann

14.50 Clinical value of calprotectin in the diagnosis and management of patients suffering from IBD – Prof. Jordi Guardiola

15.10 Fecal calprotectin testing in routine lab work: the experience from a reference center - Rouba Trad

15.25 Q&A session

Learning Objectives:

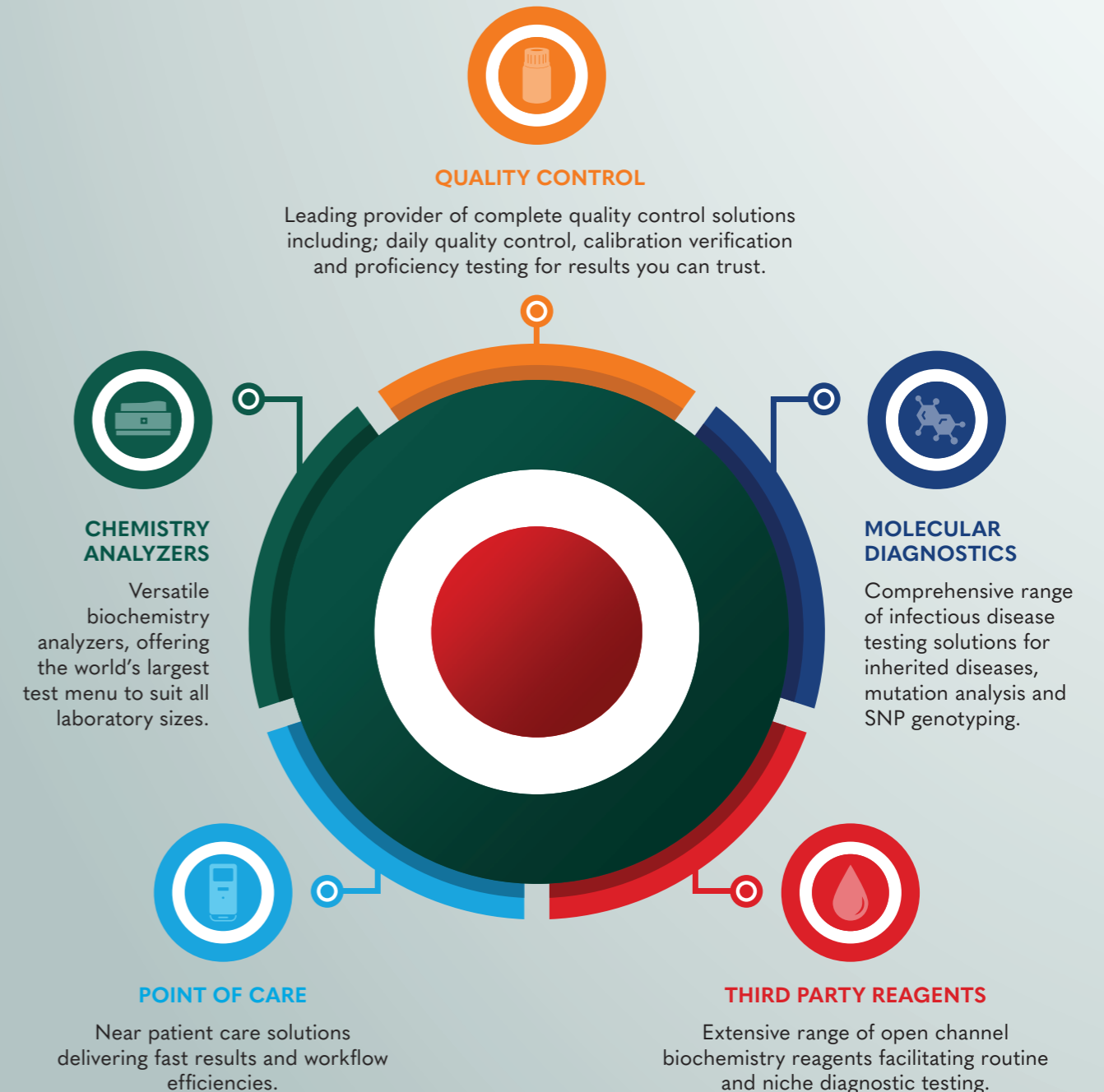
- Gain an understanding of the interesting and complex biochemistry of calprotectin and its significance as an important player in the innate immune system.
- Learn about the clinical importance of calprotectin levels and how it influences IBD patient management.
- Learn how to implement fecal calprotectin testing into automated and optimized laboratory workflow and how to overcome analytical and pre-analytical challenges.

Visit us at **Stand 41**

IFCC Worldlab 2024 Dubai

26 - 30 May

- DEDICATED TO IMPROVING HEALTH WORLDWIDE •



Visit store.randox.com to buy directly from Randox today



randox.com
marketing@randox.com

Product availability may vary from country to country. Some products may be for Research use Only. For more information on product application and availability, please contact your local Randox representative.

WEDNESDAY 29 MAY 2024



IFCC SYMPOSIUM 5

09:00-11:00 ROOM E

BIOMARKERS FOR NEURODEGENERATIVE DISEASES - IDENTIFICATION, STANDARDIZATION OF PREANALYTICAL AND ANALYTICAL PROCEDURES AND CLINICAL VALIDATION

Chairs: Hans Frykman, Kaj Blennow

The different clinical types of dementia – epidemiology. *Robin Hsiung*
 Metrological standardization of AD biomarkers - current status future perspectives. *Henrik Zetterberg*
 Identifying clinically useful biomarkers in neurodegenerative diseases - moving from CSF to blood. *Kaj Blennow*
 Biomarker panels: analytical and clinical validation against clinically relevant reference standards. *Hans Frykman*

Credits: 2 CPECS®



Hans Frykman
(Canada)



Kaj Blennow
(Sweden)



Robin Hsiung
(Canada)



Henrik Zetterberg
(Sweden)

SYMPOSIUM 7

09:00-11:00 ROOM A

MEETING THE CHALLENGE OF DEMONSTRATING VALUE IN LABORATORY MEDICINE

Chairs: Andrew St John, Phillip Monaghan

The challenges of delivering value through better test implementation, *Andrew St John*
 The EFLM TE-WG Evaluation Framework and Clinical Needs Assessment Strategy; Key Practical Tools for Value-Based Biomarker Implementation. *Phillip Monaghan*
 How we harnessed laboratory data to improve health and economic outcomes, *David G. Grenache*
 Impact of a cyber attack on laboratory operations in a university hospital: immediate response and patient security, *Sana Yaacoub*
 Le Mans Protocol – evidence-based approach to proof your choice of production concept. *Jean-Philippe Galhaud, Daria Dimitrova*

Credits: 2 CPECS®



Andrew St John
(Australia)



Phillip Monaghan
(UK)



David G. Grenache
(USA)



Sana Yaacoub
(Lebanon)



Jean-Philippe Galhaud
(France)



Daria Dimitrova
(Switzerland)

SYMPOSIUM 8

09:00-11:00 ROOM B

HOW TO IMPROVE ACCESS TO LAB TESTING IN MIDDLE & LOW INCOME COUNTRIES?

Chairs: Mario Plebani, Michael Wilson

The Lancet Commission on Diagnostics, *Michael Wilson*
 A Global Diagnostics Alliance, *Mikashmi Kohli*
 The WHO model list of essential in vitro diagnostics and its role in improving access to lab testing in LMICs *Ana Aceves Capri*
 Can lipid mediators be useful biomarkers in schizophrenia? *Ahlem Ben Messaoud*

Credits: 2 CPECS®



Mario Plebani
(Italy)



Michael Wilson
(USA)



Mikashmi Kohli
(Switzerland)



Ana Aceves Capri
(Switzerland)



Ahlem Ben Messaoud
(Tunisia)

AFCB SYMPOSIUM 2



09:00-11:00 ROOM C

EPIDEMIC AND PANDEMIC INFECTIOUS IN ARABIC REGIONS

Chairs: Abderrazek Hedhili, Hiba BadrEldin Khalil

Earthquakes, wars, and emerging infectious disease, *Christian Haddad*
 Evolution of the epidemiology of viral diseases in relation to migratory movements in the Arab Maghreb countries, *Abdelhalim Trabelsi*
 Prevalence and incidence Rate of infectious diseases in the Middle east and North Africa: Management of such diseases in low-income countries, *Ghassan Shannan*
 Viral transmission from animal to humans (zoonosis) in Middle East Challenges and risks, *Robin Abu Ghazaleh*

Credits: 2 CPECS®



Abderrazek Hedhili
(Tunisia)



Hiba BadrEldin Khalil
(UAE)



Christian Haddad
(Lebanon)



Abdelhalim Trabelsi
(Tunisia)



Ghassan Shannan
(Syria)



Robin Abu Ghazaleh
(Palestine)



SYMPOSIUM 9

09:00-11:00 ROOM D

HEALTHCARE DELIVERY IN THE 21 CENTURY AND THE ROLE OF THE CLINICAL LABORATORY

Chairs: Nader Rifai, Nashat Nafouri

Implementation of Emerging Technologies, *Ronda Greaves*

Sustainability and Environmental Impact of the Clinical Laboratory, *Ian Young*

The Role of the Clinical Laboratory in Supporting Equity in the Delivery of Healthcare, *Christina Pierre*

A Green Laboratory Approach to Medical Sample Transportation between two Medical Laboratories:

Assessing the Environmental Impact of Drone, Combustion Car, and Electric Car Transportation of Medical

Samples, *Noel Rouven Stierlin*

Green laboratory medicine in Africa: what is the contribution to environmental toxicity and how prepared

is the continent for sustainable laboratory medicine? *John Anetor*

Credits: 2 CPECS®



Nader Rifai
(USA)

Nashat Nafouri
(Saudi Arabia)

Ronda Greaves
(Australia)

Ian Young
(UK)

Christina Pierre
(USA)

Noel Rouven
Stierlin
(Switzerland)

John Anetor
(Nigeria)

COLABIOCLI SESSION

09:00-11:00 ROOM ABU DHABI B

EMERGING AND RE-EMERGING DISEASES IN LATIN AMERICA, A VIEW FROM PUBLIC HEALTH

Chairs: Maria Elizabeth Menezes, Moisés Ramos Solano

Current Molecular Diagnosis of Dengue, Zika and Chikungunya in the Region of the Americas, *Maria Elizabeth Menezes*

Molecular and Epidemiological Aspects of Dengue Infection, *Moisés Ramos Solano*

Advances in the study of innate immunity against Mycobacterium tuberculosis, *Luisa María Nieto Ramirez*

Zika a Virus that changed the History of a Generation, *Marcela Mercado*

Credits: 2 CPECS®



Maria Elizabeth Menezes
(Brazil)

Moisés Ramos Solano
(Mexico)

Luisa María Nieto Ramirez
(Colombia)

Marcela Mercado
(Colombia)

09:00 - 09:15 ROOM F

Opening Message

Maryam Matar (UAE)

UAEGDA SESSION

GENOMICS OF RARE DISEASES I

Chairs: Bassam Ali, Maryam ALShehhi, Shaikha Almazrouei

09:15 - 09:40 Unraveling common dyslipidemia in a population through genetic screening

Fahad Mahmood Al Zadjali

09:40 - 10:00 Genetics of Pediatric Cardiomyopathy: New Findings and Challenges, *Alireza Haghghi*

10:00 - 10:15 Deciphering the Genetic Landscape of ADPKD: Paving the Way for Novel Therapeutic

Targets, *Hamad Ali Yaseen*

10:15 - 10:30 Newly identified Syndromes with novel phenotypes in Omani patients, *Musallam Al Araimi*

10:30 - 10:45 Promoting Rare Diseases Research in China: Challenges and Solutions, *Boya Yu*

10:45 - 11:00 Deconstructing rare diseases with functional genomics - a Middle Eastern adventure

Luis Saraiva

Credits: 1.5 CPECS®



Bassam Ali
(UAE)

Maryam ALShehhi
(UAE)

Shaikha Almazrouei
(UAE)

Fahad Mahmood Al
Zadjali
(Oman)

Alireza Haghghi
(USA)



Hamad Ali Yaseen
(Kuwait)



Musallam Al Araimi
(Oman)



Boya Yu
(China)



Luis Saraiva
(Qatar)



Plenary Lecture

11:30-12:30 **ROOM E**

Chair: Eduardo Freggiaro (Argentina)

Obesity: novel developments in diagnostics of underlying causes and treatment

Elisabeth van Rossum (the Netherlands)



Prof Liesbeth van Rossum, MD PhD

Prof Liesbeth van Rossum, MD PhD, is internist-endocrinologist and professor in the field of obesity and stress hormone research at the Erasmus University Medical Center, Rotterdam, Netherlands. She is co-founder of the Obesity Center CGG, an internationally recognized academic center of expertise for diagnostics of underlying causes of obesity and personalized treatments.

Currently, Van Rossum holds various societal and board positions, amongst which European lead of the theme Obesity, Diabetes, Nutrition and Metabolism of the European Society for Endocrinology, member of the European Policy Working Group for obesity, chair of the National Obesity Guideline, and president of the Partnership Overweight Netherlands, an umbrella organization of 20 associations of health care organisations, with an advisory role to the Ministry of Health Welfare on obesity policy. She received multiple international awards and grants for her scientific research, is a frequently invited speaker on scientific congresses, (inter)national media, TEDx, and published with colleague Mariette Boon an international award-winning book "FAT, the secret organ".

Credits: 1 CPECS®

UAEGDA SESSION

13.00 - 14.00 **ROOM F**

WORKSHOP GENETICS FOR NON-GENETISTS

Emerging Applications of Next-Generation Sequencing in Disease Biology, *Mariam AlEissa*

Global Scenario of GC education and training and the possible strategic plans for the MENA region

B. R. Lakshmi, Quratulain Hasan



*Mariam AlEissa
(Saudi Arabia)*



*B. R. Lakshmi
(India)*



*Quratulain Hasan
(India)*

UAEGDA SESSION

14.00 - 16.00 **ROOM F**

GENOMICS OF RARE DISEASES II

Chairs: Hibat Omer, Mariam AlEissa, Noura Almatrooshi

14:00 - 14:30 Global and Regional burden of Congenital Disorders Compared with the UAE's National Burden, *Wael Osman*

14:30 - 15:00 Testing and Counselling for Genetic Disorders in the Genomic Era, *Quratulain Hasan*

15:00 - 15:20 Unveiling the Genetic Landscape of the Arab Population, *Zeina Almahayri*

15:20 - 15:40 Rare Diseases(RD): The Importance of Early Detection and Treatment in Ramathibodi Hospital Thailand, *Thanyachai Sura*

15:40 - 16:00 Rare Diseases and Gene Editing: Applications in the Neuromuscular Field, *Jon Andoni Urtizberea*

Credits: 2 CPECS®



*Hibat Omer
(UAE)*



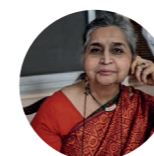
*Mariam AlEissa
(Saudi Arabia)*



*Noura Almatrooshi
(UAE)*



*Wael Osman
(UAE)*



*Quratulain Hasan
(India)*



*Zeina Almahayri
(UAE)*



*Thanyachai Sura
(Thailand)*



*Jon Andoni
Urtizberea (France)*

UAEGDA SESSION



16:15 - 17:00 ROOM F

GENOMICS OF RARE DISEASES III

Chairs: Hibat Omer, Mariam AlEissa, Noura Almatrooshi

- 16:15 - 16:35 A Holistic Model Addressing the Needs of Rare Disorders - Case of Duchenne Muscular Dystrophy (DMD), *B. R. Lakshmi*
- 16:35 - 17:00 Breaking the \$100 Genome Barrier: Our Journey from Bp to Pb, *Toby Huang*

Credits: 0.5 CPECS®



Hibat Omer (UAE)



Mariam AlEissa (Saudi Arabia)



Noura Almatrooshi (UAE)



B. R. Lakshmi (India)



Toby Huang (UAE)



AFCC SESSION

14:30-16:30 ROOM D

INBORN ERRORS OF METABOLISM IN AFRICA

Chairs: A.B. Okesina, John I. Anetor

- Challenges in National Newborn Screening Program in Africa, *A.B. Okesina*
- Prevalence of Inborn Errors of Metabolism in Africa, *John I. Anetor*
- Clinical, Laboratory and Molecular Spectrum of Galactosaemia in Newborns in Africa, *R.T. Erasmus*
- Requirements for the establishment of Newborn Screening Program in Africa, *G.T. Akalu*

Credits: 2 CPECS®



A.B. Okesina (Nigeria)



John I. Anetor (Nigeria)



R.T. Erasmus (South Africa)



G.T. Akalu (Ethiopia)

SYMPOSIUM 10

14:30-16:30 ROOM B

TOXICOLOGY ENVIRONMENTAL AND HEALTH EFFECTS

Chairs: Abderrazek Hedhili, Ahmad Al Asmari

- Use of Per- and polyfluoroalkyl substances (PFASs) in medical technologies, what are the challenges with finding alternatives, how these technologies containing PFAS are handled at the end of life and how risks are managed, *Aldo Tomasi*
- Exposure and Health Effects of Perfluoroalkyl Substances (PFAS): Insights from Population Surveys and Risk Assessment, *Nolwenn Noisel*
- The evolution of human biomonitoring and its impact on clinical laboratory medicine, *David Kinniburgh*

Credits: 2 CPECS®



Abderrazek Hedhili (Tunisia)



Ahmad Al Asmari (Saudi Arabia)



Aldo Tomasi (Italy)



Nolwenn Noisel (Canada)



David Kinniburgh (Canada)



NAFCC SESSION

14:30-16:30 ROOM E

LABORATORY MEDICINE ADVANCING GLOBAL HEALTH ACROSS THE LIFESPAN

Chairs: Octavia M Peck Palmer, Paul M. Yip

- Pediatric health: Vitamin and Trace element testing, *Kamisha Johnson-Davis*
- New chance at life: Infectious disease testing, *Allison A Venner*
- Maternal-fetal health: Early detection of pre-eclampsia, *Paul M. Yip*
- Medically underserved populations: Delivering evidence-based care via point of care testing, *Octavia M Peck Palmer*

Credits: 2 CPECS®



Octavia M Peck Palmer (USA)



Paul M. Yip (Canada)



Kamisha Johnson-Davis (USA)



Allison A Venner (Canada)



Educational Workshop 17

14.30 - 17.00 ROOM A

Looking beyond the Future of Laboratory Medicine

CHAIR 1: Prof. Praveen Sharma

SPEAKER 1: Prof. Maurizio Ferrari

SPEAKER 2: Prof. Issam Frigaa

SPEAKER 3: Dr. Ali Bayoumi

SPEAKER 4: Prof. Aaron Han

CHAIR 2: Prof. Vincent Sapin

SPEAKER 5: Prof. Tahir Pillay

SPEAKER 6: Dr. B. K. T. P. Dayanath

SPEAKER 7: Dr. Dheepa Manoharan

PROGRAMME:

SESSION 1 - 14:30-15:50

Moderator - Prof. Praveen Sharma

14:30-14:50 How to Imagine the Future of Laboratory Medicine? - Prof. Maurizio Ferrari

14:50-15:10 Strategies and New Challenges in Blood Donor Screening - Prof. Issam Frigaa

15:10-15:30 Establishing Reliable Reference Intervals: a Crucial Step in Accurate Diagnosis and Treatment - Dr. Ali Bayoumi

15:30-15:50 Laboratory Quality Management and CAP Accreditation - Prof. Aaron Han

SESSION 2 - 15:50-17:00

Moderator - Prof. Vincent Sapin

15:50-16:10 Reproductive Hormone Assays Using Chemiluminescence - Prof. Tahir Pillay

16:10-16:30 Dynamic & Invasive Endocrine Function Tests - Dr. B. K. T. P. Dayanath

16:30-16:50 Quality in Chemistry - Dr. Dheepa Manoharan

Learning Objectives:

- Know the trends in diagnostics
- Understand Intelligent Laboratory and iXLAB
- Understand various detection techniques and their applications in the future
- To know the situation of blood donor screening and the challenges confronting
- To understand the methods and strategies in blood donor screening
- To know the importance and challenges of establishing the reference interval.
- To understand what to do for reference interval in the future
- Review assay methodology, quality control and assurance and gain insights into troubleshooting potential quality issues in reproductive hormone chemiluminescence assays.
- Interpretation of reproductive hormone assays in different scenarios, such as infertility assessments, hormonal disorders, and monitoring hormone replacement therapies.
- Review and compare different methods for endocrine function

29 MAY
Corporate workshops



Join us at IFCC WorldLab 2024

26-30 May | Booth #B50

Dubai World Trade Centre



Transforming patient care with tailored laboratory solutions

The demand on labs is greater than ever, bringing with it the need to operate more efficiently while maintaining precision. Join us to discover how QuidelOrtho's comprehensive range of solutions addresses the challenges of increasing workloads and stretched personnel by streamlining routine tasks and saving valuable hours.

Informatics that power your lab: High-quality results, faster

Vitros® Results Management allows labs to easily standardize configurations, build auto verification rules, view integrated quality control (QC) and moving averages, allowing you to focus on what really matters - your patients' lives.

Elevating precision medicine with advanced point-of-care and molecular diagnostics

Transformative potential of point-of-care testing in key clinical scenarios with an emphasis on improving patient care and fostering diagnostic stewardship programs.

Expert insights

Lunch Workshop 2

Monday 27 May | Room C | 13:00-14:00

Convergence of clinical diagnostics and population health

Evolving to Clinical Lab 2.0 from business of volume to business of value.

Clinical diagnostics are vital for a sustainable healthcare future as they help shift from volume to value, providing crucial data to predict, monitor and manage clinical risks. The true value of the lab starts when results spur actionable insights. This workshop will inspire laboratory professionals to rethink the role of clinical laboratories.



Chair

Els Melis
Senior Marketing Manager Clinical Labs, QuidelOrtho



Speaker

Khosrow R. Shotorbani MBA, MT (ASCP)
President, Executive Director Project Santa Fe Foundation. Founder, CEO Lab 2.0 - Strategic Services, LLC



SYMPOSIUM 11

09:00-11:00 ROOM E

CIRCULATING CANCER BIOMARKERS: QUO VADIS?

Chairs: Ron HN van Schaik, Dobrin Svinarov

Liquid biopsy / cell free DNA analysis: too hot to handle, or right up our alley? *Ron HN van Schaik*
 Liquid biopsy: from discovery to clinical implementation, *Simon Joosse*
 Integrating liquid biopsy with advanced imaging analysis to improve the prediction of response to immune therapy in patients with NSCLC, *Marzia del Re*
 Improving endpoint digital PCR in multiplexing capacity and specificity for multigene-associated disease detection, *Dongdong Liu*

Credits: 2 CPECS®



Ron HN van Schaik
(the Netherlands)



Dobrin Svinarov
(Bulgaria)



Simon Joosse
(Germany)



Marzia del Re
(Italy)



Dongdong Liu
(China)

SYMPOSIUM 12

09:00-11:00 ROOM A

PREVENTING KIDNEY DISEASE USING ADVANCED URINE SCREENING AND KIDNEY DAMAGE MARKERS

Chairs: Joris Delanghe, Osama Najjar

Update to laboratory assessment of kidney diseases, *Joris Delanghe*
 Preventing diabetic nephropathy, follow-up with laboratory markers, *Marc De Buyzere*
 Urine particle analysis in detection of kidney diseases, *Rosanna Falbo*
 Raman spectroscopic analysis of urine combined with machine learning identifies life-threatening inborn errors of metabolism, *Jing Cao*
 Interferences in non-immunological albumin assays by carbamylated albumin, *Hans Günther Wahl*

Credits: 2 CPECS®



Joris Delanghe
(Belgium)



Osama Najjar
(Palestine)



Marc De Buyzere
(Belgium)



Rosanna Falbo
(Italy)



Jing Cao
(USA)



Hans Günther Wahl
(Germany)



SSCC SYMPOSIUM 2

09:00-11:00 ROOM B

DYSGLYCEMIA - NOVEL BIOMARKERS FOR DIAGNOSIS AND MONITORING PROGNOSIS

Chairs: Suhad Bahijri, Manel Chaabane

Epidemiology of Diabetes in the Arabian Gulf Countries: Challenges and Opportunities, *Yousef Al Saleh*
 Use Of Glycated Products In Diagnosis, *Nafila Al Riyami*
 Use of 1-hour glucose challenge test in diagnosis and predicting future complications, *Jaakko Tuomilehto*
 Novel Biomarkers to improve diagnosis and monitor prognosis, *Suhad Bahijri*

Credits: 2 CPECS®



Suhad Bahijri
(Saudi Arabia)



Manel Chaabane
(Tunisia)



Yousef Al Saleh
(Saudi Arabia)



Nafila Al Riyami
(Oman)



Jaakko Tuomilehto
(Finland)

SYMPOSIUM 13

09:00-11:00 ROOM C

PERFORMANCE SPECIFICATIONS OF MEDICAL TESTS BASED ON CLINICAL OUTCOME STUDIES

Chairs: Andrea Rita Horvath, Mohammed Habbab

Outcome-based analytical performance specifications - current status and future directions
Andrea Rita Horvath
 Testing related outcomes and analytical performance - the linked evidence approach, *Patrick Bossuyt*
 A practical approach to determining blood ketone performance specifications, *Eric Kilpatrick*
 Why most diagnostic studies overestimate test performance: evidence from a large-scale meta-analysis
Michael Nagler
 Implementation and evaluation of hyper-automated newborn bloodspot screening for SCID and SMA in Victoria, Australia, *Nazha Mawad*

Credits: 2 CPECS®



Andrea Rita Horvath
(Australia)



Mohammed Habbab
(Saudi Arabia)



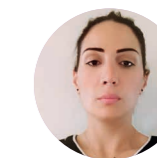
Patrick Bossuyt
(the Netherlands)



Eric Kilpatrick
(Qatar)



Michael Nagler
(Switzerland)



Nazha Mawad
(Australia)



SYMPOSIUM 14

09:00-11:00 ROOM D

UTILIZATION MANAGEMENT AND SUCCESSFUL APPROACHES TO CHANGE AND IMPROVE TEST REQUESTING

Chairs: Mario Plebani, Waleed Al Omair

Utilization management and appropriateness in clinical laboratory: state-of-the-art, *Mario Plebani*
 How to deal with inappropriate laboratory retesting? *Ivana Lopic*
 The noble art of leaving out, *Prabath Nanayakkara*
 Monitoring magnesium status in the pediatric liver transplant: total or ionized? *Estéfani Martínez Chávez*
 Comparison of non-invasive testing strategies by costs and referral rates in veteran population with Metabolic Dysfunction-Associated Steatotic Liver Disease (MASLD), *Artem T. Boltyenkov*

Credits: 2 CPECS®



Mario Plebani (Italy)



Waleed Al Omair (Saudi Arabia)



Ivana Lopic (Croatia)



Prabath Nanayakkara (the Netherlands)



Estéfani Martínez Chávez (Spain)



Artem T. Boltyenkov (Germany)

UAE SYMPOSIUM 2

09:00-11:00 ROOM ABU DHABI B

AI & MACHINE LEARNING APPLICATIONS IN LABORATORY MEDICINE

Chairs: Laila AbdelWareth, Ola Elgaddar

Case study of machine learning and AI application in pathology, *Ayub Nahal*
 AI and Decision support systems, *Hady Elkhodary Dubai*
 Intraoperative Mass Spectrometry; Recent updates and Challenges to Implementation, *Shereen Hassan Atef*
 Medical Laboratories between shrinking workforce and Artificial Intelligence, *Ola Elgaddar*

Credits: 2 CPECS®



Laila AbdelWareth (UAE)



Ayub Nahal (UAE)



Hady Elkhodary Dubai (UAE)



Shereen Hassan Atef (UAE)



Ola Elgaddar (UAE)

09:00 - 09:15 ROOM F

Opening Message

Ministry of Artificial Intelligence (UAE)

UAEGDA SESSION

GLOBAL HEALTH AI: UNITING NATIONS FOR GENOMIC INSIGHTS AND DATA GOVERNANCE

Chairs: Mazin Gadir, Fady Hannah-Shmouni, Philippe Gerwill

- 09:15 - 09:30 From Data to Action: AI-powered Personalized Medicine and Global Health Equity
Noor AlSaadoun
- 09:30 - 09:45 Will Artificial Intelligence deliver Genomic Medicine? Review of applications of artificial intelligence in genomic medicine. *Mark Bartlett*
- 09:45 - 10:00 The Automation of Clinical Genetic Data through Implementation of ACMG guidelines
Mariam Eldesouky
- 10:00 - 10:15 Beyond Borders, Beyond Bias: Can XR Revolutionize Healthcare Equity? *Sana Farid*
- 10:15 - 10:30 PreciousGPT: Multimodal multiomics multi-species, multi-tissue multitasking transformers for aging research and drug discovery, *Alex Zhavoronkov*

Credits: 1,5 CPECS®



Mazin Gadir (UAE)



Fady Hannah-Shmouni (UAE)



Philippe Gerwill (UAE)



Noor AlSaadoun (Saudi Arabia)



Mark Bartlett (UK)



Mariam Eldesouky (UAE)



Sana Farid (Saudi Arabia)



Alex Zhavoronkov (UAE)

UAEGDA SESSION

PANEL DISCUSSION - GENOMICS IN THE METAVERSE

Chairs: Philippe Gerwill, Noor AlSaadoun

- 10:45 - 11:30 Panel discussion
Muhammed Fafis, Khulood AlSayegh, Alex Zhavoronkov, Sonal Ahuja, Sana Farid

Credits: 0,5 CPECS®



Philippe Gerwill (UAE)



Noor AlSaadoun (Saudi Arabia)



Muhammed Fafis (UAE)



Khulood AlSayegh (UAE)



Alex Zhavoronkov (UAE)



Sonal Ahuja (UAE)



Sana Farid (Saudi Arabia)



Empowering Trust

Welcome to Mindray Booth:

📍 40/61/62



Plenary Lecture

11:30-12:30 **ROOM E**

Chair: Anwar Borai (Saudi Arabia)
Making molecular diagnostics faster
 Carl Wittwer (USA)



Carl Wittwer
 MD, PhD is Professor Emeritus of Pathology at the University of Utah.

Carl Wittwer, MD, PhD is Professor Emeritus of Pathology at the University of Utah. With more than 200 articles focusing on technique and instrument development in molecular diagnostics, he developed rapid PCR (15 min) in the 1990s and was the primary inventor of the LightCycler® system, with over 10,000 units placed worldwide by Roche. Carl holds over 40 US patents and their foreign equivalents. He introduced SYBR Green, hybridization probes, and melting analysis to real-time PCR and continues to develop extreme PCR (< 1 min) and high-speed DNA melting (<5 s). Carl co-founded BioFire Diagnostics and served as Chairman of the Board from 2012 until its acquisition by bioMérieux in 2014, most notable for the FilmArray syndromic diagnostic platform with over 20,000 placements worldwide. He is an Associate Editor of Clinical Chemistry and chair of the Scientific Advisory Board of CoDiagnostics. Much of his work can be found at www.dna-utah.org.

Credits: 1 CPECS®

CLOSING CEREMONY

12:30-13:00 **ROOM E**

Closing remarks
 IFCC and Congress President, T. Ozben
 Chairs of the Organizing Committee, K. Adeli, A. Borai
 AFCB President, C. Haddad
 SSCC President, S.H. Sobki
 UAEGDA Chairperson, M. Matar

Welcome to Belgium
 IFCC-EFLM Euromedlab Brussels 2025, D. Gruson, T. Ozben

Welcome to India
 IFCC Worldlab New Delhi 2026, T. Ozben, R. Ranjan Sinha



M680 Chemistry and Immunoassay Integrated System



CAL 8000 All-in-One Hematology Solution

The Closed Meetings will be held at Conrad Hotel

CLOSED MEETING

25 Saturday May 2024

09:00-17:00 IFCC SD-EC – Chair: C. Cobbaert Room 5 - Sir Bani Yas, Level 4
 09:00-17:00 IFCC CPD-EC – Chair: T. Pillay Room 6 – Sir Bu Naier, Level 4

26 Sunday May 2024

08:30-12:30 IFCC EMD-EC – Chair: N. Rifai Boardroom 3 - Yas, Level 4
 08:30-12:30 IFCC CPD-EC – Chair: T. Pillay Room 6 - Sir Bu Naier, Level 4
 08:30-12:30 IFCC TF-GLQ – Chairs: E. Amann, Q. Meng Room 10 - Al Maryah, Level 4
 08:30-16:00 IFCC Young Scientists Forum Ballroom (CD), Level 4
 08:30-16:30 IFCC C-ETPLM – Chair: L. Kyriakopoulou Boardroom 1, Level 2
 09:00-12:30 IFCC SD-EC – Chair: C. Cobbaert Room 5 - Sir Bani Yas, Level 4
 09:00-13:00 IFCC TF- GRID – Chair: J. Zierk Room 2 - Khasifa, Level 2
 09:00-13:00 IFCC TF-OSLM – Chair: Z. Zhao Room 4, Level 2
 09:00-16:00 IFCC C-NPU – Chair: Y.B. Lee Room 3 - Saadiat, Level 2
 13:00-16:00 IFCC Council Ballroom (AB), Level 4
 13:00-17:00 IFCC C-KD – Chair: J. El Khoury Boardroom 3 - Yas, Level 4
 13:30-17:30 IFCC C-RIDL – Chair: T. Streichert Room 10 - Al Maryah, Level 4

27 Monday May 2024

08:30-12:30 IFCC WG-FC – Chair: C. Lambert Room 4, Level 2
 08:30-15:30 IFCC C-PR – Chair: MdC Pasquel Room 3 - Saadiat, Level 2
 08:30-17:00 IFCC ETD-EC – Chair: D. Gruson Room 5 - Sir Bani Yas, Level 4
 08:30-17:00 IFCC C-EUBD/Hba1c Boardroom Palm, Level 2
 Chairs: E. English, C. Siebelder
 08:30-17:00 IFCC C-IDC – Chair: D. Topcu Ballroom (F), Level 4
 09:00-11:00 IFCC TF-CM – Chair: J.S. Blanchet Ballroom (D), Level 4
 09:00-13:00 IFCC C-CC – Chair: P. Laitinen Boardroom 3 - Yas, Level 4
 09:00-13:00 IFCC C-POCT – Chair: A. Khan Room 6 – Sir Bu Naier, Level 4
 09:00-13:00 IFCC C-BM – Chair: E. Cavalier Room 10 - Al Maryah, Level 4
 09:00-13:00 IFCC C-EBLM – Chair: A. Don Wauchope Boardroom 1, Level 2
 09:00-13:00 IFCC WG-LEPS – Chair: A. Plebani Room 2 - Khasifa, Level 2
 11:30-13:30 IFCC Executive Board / Corporate Members Ballroom (D), Level 4
 IFCC President: T. Ozben / Corporate Members' Representative: T. Ravalico
 13:00-17:00 IFCC C-CLM – Chair: P. Sharma Room 4, Level 2
 13:30-17:30 IFCC TF-NBS Boardroom 1, Level 2
 Chairs: J. Bonham, A. Habib Khan
 13:30-17:30 IFCC WG-IANT – Chair: R. Girardi Room 2 - Khasifa, Level 2
 14:00-17:30 IFCC TF-LMPG – Chair: T.P. Loh Boardroom 3 - Yas, Level 4
 14:00-17:30 IFCC C-STFT – Chair: K. Van Uytfanghe Room 6 – Sir Bu Naier, Level 4
 14:00-17:30 AACC EB Members Room 10 - Al Maryah, Level 4
 AFCC President: M. Charles Davies
 15:00-18:00 IFCC WG-PCT – Chair: A. Boeuf Ballroom (D), Level 4

The Closed Meetings will be held at Conrad Hotel

CLOSED MEETING

28 Tuesday May 2024

08:00-10:00 IFCC WG CGM – Chair: G. Freckmann Room 4, Level 2
 08:30-11:30 IFCC WG-BND – Chair: H. Zetterberg Room 6 - Sir Bu Naier, Level 4
 08:30-12:30 IFCC APFCB EB – Chair: T. Badrick Room 10 - Al Maryah, Level 4
 08:30-12:30 IFCC WG-ID – Chair: C. Stobe Ballroom (F), Level 4
 08:00-13:00 IFCC WG-M – Chair: E. Fux Boardroom 1, Level 2
 08:30-13:00 IFCC WG eJIFCC Room 3 - Saadiat, Level 2
 Chairs: HP. Batthoa, K. Vaidyanathan
 08:30-13:00 IFCC WG APO – Chair: R. Ruhaak Room 5 - Sir Bani Yas, Level 4
 08:30-17:30 IFCC WG-NB – Chairs: R. Greaves - L. Macka Ballroom (D), Level 4
 12:30-16:30 IFCC WG-SCST – Chair: A. South Room 6 - Sir Bu Naier, Level 4
 13:00-17:00 IFCC TF-YS – Chair: S. Fares Taie Room 10 - Al Maryah, Level 4
 13:30-17:30 IFCC C-TLM – Chair: D Grote-Koska Ballroom (F), Level 4
 13:30-17:00 IFCC TF-GEL – Chair: A. Park Room 5 - Sir Bani Yas, Level 4
 14:00-17:30 IFCC WG AIGD – Chair: SH Yang Room 3 - Saadiat, Level 2
 14:00-17:30 IFCC C-MHBLM – Chair: J. Nichols Room 4, Level 2

29 Wednesday May 2024

08:30-12:30 IFCC WG e-News – Chair: K. Psarra Boardroom 3 - Yas, Level 4
 09:00-13:30 IFCC WG-MEP – Chairs: R. Greaves - TP Loh Room 6 - Sir Bu Naier, Level 4
 13:30-17:30 IFCC TF-EILM – Chair: J. Anetor Boardroom 3 - Yas, Level 4
 17:00-18:30 IFCC-CSLM – IFCC President: T. Ozben Room 6 - Sir Bu Naier, Level 4

30 Thursday May 2024

14:00-17:30 IFCC EB Meeting – IFCC President: T. Ozben Room 6 - Sir Bu Naier, Level 4

31 Friday May 2024

14:00-17:30 IFCC EB Meeting – IFCC President T. Ozben Room 6 - Sir Bu Naier, Level 4

Abdelalim Essam, Qatar Biomedical Research Institute
AbdelWareth Laila, National Reference Laboratory
Abu Ghazaleh Robin, Palestine Polytechnic University
Aceves Capri Ana, WHO
Adeli Khosrow, IFCC Past President, Pediatric Laboratory Medicine, The Hospital for Sick Children, University of Toronto, Canada
Adrian Thomas, MBRU, UAE
Ahmad Sujjad, University College London
Ahmed Fayha Salah, Dubai Health, Department of Laboratory Medicine and Pathology
Ahuja Sonal, AR VR Academi-AI & Metaverse Lab Dubai
Akalu Gizachew Tadesse, Department of Microbiology, Immunology and Parasitology, St. Paul's Hospital Millennium Medical College
Al Aرامي Musallam, Ministry of Health
Al Asmari Ahmad, Head of Special Toxicological Analysis Section Senior Toxicology Scientist & Consultant Forensic Toxicologist King Faisal, Special Hospital and Research Center Riyadh, Kingdom of Saudi Arabia
Al Harbi Khalid, Professor and Consultant in Medical Molecular Genetics Chairman of Saudi Society for Clinical Laboratory Sciences Member of Saudi Society for Clinical Chemistry King Saud University, Riyadh
Al Khodor Souhaila, Sidra Medicine
Al Omaim Waleed, Consultant Chemical Pathology at department of Pathology and Laboratory Medicine in King Faisal Specialist Hospital and Research Center, Riyadh, Saudi Arabia
Al Riyami Nafila, Sultan Qaboos University Hospital
Al Saleh Yousef, Medical Director, Health Oasis Hospital
Al Tamimi Waleed, Corporate Director of Lab Quality & Compliance at Dr Sulaiman Al-Habib Medical Group (HMG) Professor/Consultant, Clinical Biochemistry Lab, King Abdulaziz Medical City, Riyadh
Al Zadjali Fahad Mahmood, Oman College of Health Sciences
AlEissa Mariam, Al Faisal University, KSA
Alfadhel Majid, Chairman of Genetics and Precision Medicine Department (GPM); King Abdullah Specialized Children Hospital (KASCH); MNG-HA
Alghamdi Malak, College of Medicine, King Saud University
AlHammadi Ahmed, Emirates Infectious Diseases Society
Ali Bassam, UAEU
Alkhatib Adnan, Consultant Clinical Pathology, President of Syrian Clinical Laboratory Association, C/O of Alkhatib Medical laboratory.
Alkuraya Fowzan Sami, KFSH&RC
Almahayri Zeina, UAEU / The Golden Helix Foundation UK
Al-Mahayri Zeina, The Golden Helix Foundation, UK
Almatrooshi Noura, UAEGDA
Almazrouei Shaikha, UAEGDA
Almheiri Mariam, Director of the Presidential Court Office of International Affairs, UAE Cabinet
Almontashiri Naif, Center for Genetics and Inherited Diseases, Taibah University
Almutairi Fuad, King Abdulaziz Medical City - MNGHA
Alothaim Ali
Al-Razouki Mussaad, Deerfield Management
AlSaadoun Noor, Al Faisal University
AlSayegh Khulood, DHA
Alsbou Mohammed, Ajman University
AlShammary Sfoug, Osaka University / Al Ghurari University, UAE
AlShehhi Maryam, Sheikh Khalifa Medical City
Anetor John I., Department of Chemical Pathology, College of Medicine, University of Ibadan
Arishi Wjdan, Alfaisal University, Al Zahrawi Street, Al Maather, ALTakhassusi Rd, Riyadh 11533, Saudi Arabia
Ashour Ahmed, University of Oxford
Atef Shereen Hassan, Acting head of clinical chemistry ,consultant clinical pathology, National Reference Laboratory, General Secretary of Emirates Clinical Chemistry Society
BadrEldin Khalil Hiba, University Professor of Hematology and Stem Cell Technology in Laboratory Medicine, Sudan
Badrick Tony, Royal College of Pathologists of Australasia Quality Assurance

Bahijri Suhad, Professor of Clinical Biochemistry and Nutrition, Department of Clinical Biochemistry, Faculty of Medicine, Saudi Diabetes Research Group, Deanship of Scientific Research, Food, Nutrition and Lifestyle Unit, King Fahd Medical Research Centre, King Abdulaziz University, Jeddah Saudi Arabia.
Bajou Khalid, University of Sharjah
Barbouche Mohamed Ridha, Arabian Gulf University, Manama, Bahrain
Bartlett Mark, Storegene
Bayoumi Riad, College of Medicine, Mohammed Bin Rashid University of Medicine and Health Sciences, Dubai, UAE
Ben Messaoud Ahlem, Laboratory of Biochemistry, Rabta Hospital, Tunisia
Bernardini Sergio, University of Tor Vergata, Dept. of Experimental Medicine
Bischof Evelyne, Shanghai University of Medicine and Health Sciences
Blennow Kaj, Clinical Neurochemistry Lab, University of Gothenburg
Boltyenkov Artem T., Siemens Healthcare Diagnostics Inc., Tarrytown, NY 10591, USA
Borai Anwar, SSCC representative to the IFCC
Bossuyt Patrick, Amsterdam University Medical Centers
Brahimi Mohamed, Hematology EHU "1er Novembre 1954" Oran
Cao Jing, University of Texas Southwestern Medical Center
Chaabane Manel, Pharmacist Doctor, Professor of Hematology, Head of Serology and cell therapy department, National Blood Transfusion Center of Tunisia
Chabraoui Layachi, Biochemistry Laboratory, University Hospital of Rabat Morocco
Chachou Abdelhalim, Head of Clinical biology laboratory Mouzaia - ALGERIA
Chao Liu, Hemogen
Chayoua Walid, Department of Clinical Chemistry and Laboratory Medicine, Medisch Spectrum Twente, Enschede, The Netherlands
Cho Raymond, UCSF Department of Dermatology
Cobbaert Christa M., Department of Clinical Chemistry and Laboratory Medicine Leiden University Medical Centre (LUMC), Leiden, the Netherlands
Cui Wei, Department of Clinical Laboratory, Cancer Hospital, Chinese Academy of Medical Sciences
De Buyzere Marc, DEPT INT MED UNIVERSITY HOSPITAL GHENT BELGIUM
Dedeene Lieselot, Department of Laboratory Medicine, AZ Delta General Hospital, Roeselare, Belgium
Del Re Marzia, University of Pisa
Delanghe Joris, Ghent University
Di Donna Vincenzo, Cornerstone Clinic
Dimitrova Daria, GontardCie Group, 157 Kantonstrasse, FRIENBACH 8807
Eisenhofer Graeme, Department of Medicine III, University Hospital Dresden
Eldesouky Mariam, MBRU
Elgaddar Ola, Associate Professor of Chemical Pathology, Alexandria University, Egypt / GM of Al Borg Dx, UAE / Media and Public Relations Chairperson, EMA Clinical Chemistry Society
Elkhodary Hady, American Hospital Dubai
El-Khoury Joe M., Yale University
Elshenawy Shima, Egypt Center for Research & Regenerative Medicine
Erasmus Rajiv T., Chemical Pathology, Tygerberg Hospital, Stellenbosch University, Cape Town
Esho Adriana, University of Melbourne
Fafis Muhammed, Aimesis BV
Fakhurji Burhani, Gene
Falbo Rosanna, ASST Brianza-Laboratorio Analisi, Ospedale Pio XI, Desio, Italy
Falco Geppino, Federico II University of Naples
Fares Taie Hernán, Chair of 'New paradigms and trans-disciplines' group of COLABIOCLI. Former member of IFCC EBLM committee. Director of SABIO project (CDS). Director of Fares Taie Laboratory, Argentina
Fares Taie Santiago, IFCC TF-YS
Farid Sana, Prince Sultan University
Ferrari Maurizio, IFCC Past President, Chief Medical Officer (CMO) Synlab Italia
Fortina Paolo, Thomas Jefferson University
Freggiaro Eduardo, IFCC Board Member - International Federation of Clinical Chemistry and Laboratory Medicine Regional Representative COLABIOCLI
Frykman Hans, University of British Columbia, Neurocode Lab
Fuentes Ignacia, Pontificia Universidad Católica de Chile
Gadir Mazin, IQVIA

Galhaud Jean-Philippe, Cerballiance Nouvelle Aquitaine, 75 rue de la Morandière, 33185 Le Haillan
Gammie Alistair, Principal Independent Consultant, Quidel Ortho
Germanos Myrna, Lebanese Syndicate of Clinical Biologists, President
Gernez Emeline, Biochemistry Institute, Biology Center, Lille University Hospital, Lille, France
Gerwill Philippe, UAEGDA / My Anna Health
Ghazi Lama, University of Alabama at Birmingham
Greaves Ronda, VCGS, Murdoch Children's Research Institute
Grenache David G., TriCore Reference Laboratories
Griesmacher Andrea, University Hospital of Innsbruck
Gruson Damien, Cliniques Universitaires Saint-Luc
Grzych Guillaume, Biochemistry Institute, Biology Center, Lille University Hospital, Lille, France
Habbab Mohammed, Senior Consultant Cardiologist & Electrophysiologist, Specialized Centers Administration, Ministry of Health, Riyadh, KSA
Habibollah Saba, UAEGDA
Haddad Christian, President, Arab Federation of Clinical Biology and Laboratory Medicine
Haghighi Alireza, Harvard
Haliassos Alexander, GSCC-CB and ESEAP Athens, Greece
Hamiche Ali, Institute of Genetics and of Molecular and Cellular Biology (IGBMC)
Hamaoui Rifat, University of Sharjah
Han Aaron, Emirates Pathology Society / College of American Pathologists
Hannah-Shmouni Fady, Healthspan Digital
Hasan Qurratulain, Board of Genetic Counselling India
Hashmi Shahrukh, Sheikh Shakhbout Medical City AD
Hedhili Abderrazek, COC and Scientific Program Committee member
Hofheinz Ralf, Mannheim Cancer Center, University of Heidelberg
Horvath Andrea Rita, NSW Health Pathology
Hsiung Robin, University of British Columbia
Huang Toby, MGI Technology
Jackson Ffion, Siemens Healthineers
Jacobs Hans, Radboud university medical center
Jamali Fatimam, UAEGDA / University of Jordan
Jeremijenko Andrew, Capital Health Screening Centre / M42
Johnson-Davis Kamisha, University of Utah / ARUP Laboratories
Josse Simon, University Medical Center Hamburg-Eppendorf
Jovicic Snezana, Department for Medical Biochemistry, University of Belgrade - Faculty of Pharmacy
Kamei Ken-ichiro, NYUAD
Kay Weng Choy, Northern Pathology Victoria, Northern Health
Kayasseh Mohd Azzam, Liver Transplantation Care Program
Khan Jaffer, Aesthetics International
Khazanehdari Kamal, Molecular Biology & Genomics Centre
Kilpatrick Eric, Sidra Medicine
Kinniburgh David, Alberta Centre for Toxicology, University of Calgary
Kiwan Yahya, Dr Sulaiman Al-Habib Hospital
Kohli Mikashmi, FIND
Lakshmi B.R., Molecular Diagnostics Counselling Care and Research Centre India (MDCRC), India
Lambert Claude, University Hospital Saint-Etienne, IFCC Flow Cytometry Working Group
Lapic Ivana, Department of Laboratory Diagnostics, University Hospital Center Zagreb
Lauc Gordon, Genos
Li Yingfu, Department of Biochemistry and Biomedical Sciences, McMaster University
Liu Dongdong, Institute for Health Innovation and Technology, National University of Singapore, Singapore
Lo Dennis, Associate Dean (Research) and Li Ka Shing Professor of Medicine, The Chinese University of Hong Kong
Lockwood Tina, University of Washington
Loh Tze Ping, National University Hospital, Singapore
Mahmood Yaseen Hachim Al Mashhadani, MBRU, UAE
Makrelouf Mohamed, Genetic Biochemistry Research Laboratory - Benyoucef Benkheda University - Algiers 1 - Algeria

Martinez Chávez Estéfani, Laboratory Medicine Department, La Paz University Hospital-IdiPAZ, Madrid, Spain
Master Stephen, Children's Hospital of Philadelphia / University of Pennsylvania
Matar Maryam, UAEGDA
Matsa Lova, Igenomix
Mawad Nazha, Newborn Screening Laboratory, Victorian Clinical Genetics Services, Melbourne
McCombe Andrew, Dubai Herbal & Treatment Center
Megarbane Andre, Lebanese American University
Mekki Najla, Immunology Department, Pasteur Institute of Tunis, Tunisia
Menezes Maria Elizabeth, Sociedade Brasileira de Análises Clínicas-SBAC
Mercado Marcela, Clinical Leader BD
Mezaal Mohammed, Iraqi Society for Molecular Biology and Genetics (ISMBG) / UAEGDA
Monaghan Phillip, Christie Pathology Partnership
Mora Samia, Harvard Medical School, Brigham and Women's Hospital
Nafouri Nashat, Chair, Healthcare Interest Group Executive officer, Saudi Quality Council Quality & Organizational Excellence Consultant, Quality Logic Chair, Lab Quality Management Conference, Medlab
Nagler Michael, Department of Clinical Chemistry, Inselspital, Bern University Hospital, University of Bern, Bern
Nahal Ayoub, Cleveland Clinic Abu Dhabi, National Reference Laboratory
Najjar Osama, Arab Federation of Clinical Biology (AFCB) - IFCC EB Member
Nanayakkara Prabath, Amsterdam University Medical center
Neumaier Michael, Institute for Clinical Chemistry, University Medicine Mannheim, Heidelberg University
Nieto Ramirez Luisa María, COLBAV and Colorado State University
Nikolousis Emmanouil, American Hospital Dubai
Nilius Henning, Department of Clinical Chemistry, Inselspital, Bern University Hospital, University of Bern, Bern
Noisel Nolwenn, Environmental and Occupational Health Department, School of Public Health, University of Montréal & Centre for Public Health Research (CRESP)
Okesina Adekunle Bashiru, University of Ilorin Teaching Hospital, Nigeria
Omer Hibat, Genomics Hub
Orth Matthias, Vinzenz von Paul Kliniken & Heidelberg University, Medical Faculty of Mannheim
Osman Wael, Khalifa University
Ozben Tomris, IFCC President
Padoan Andrea, Department of Medicine (DIMED), University of Padova, Italy
Peck Palmer Octavia M., University of Pittsburgh School and Medicine and UPMC
Pierre Christina, Penn Medicine- Perelman School of Medicine
Plaxco Kevin, University of California, Santa Barbara
Plebani Mario, EFLM President, University of Padova, Italy
Ramos Solano Moisés, University of Guadalajara - CUCS
Raslan Heba, King Fahad Specialist Hospital Dammam
Reijnders Esther, Leiden University Medical Center, Leiden, The Netherlands
Rifai Nader, Boston Children's Hospital
Romani Luigina, University of Perugia
Ruhaak Renee, Leiden University Medical Center
Sabbour Hani, Medclinic Abu Dhabi
Sandberg Sverre, Norwegian organisation for Quality Improvement of Laboratory Examinations (Noklus)
Saraiva Luis, Sidra Medicine
Sawa Yoshiki, Osaka University
Seija Verónica, Dpto. Laboratorio clínico. Hospital de clínicas. Facultad de Medicina Universidad de la República. Montevideo, Uruguay
Selvaratnam Rajeevan, University Health Network
Shannan Ghassan, Head of Biochemistry Department, Al Rasheed University
Shehata Mishkat, La Familia Medical Centre
Shih Patti, University of Wollongong
Sikaris Ken, Sonic Healthcare (Australia)
South Andrew, Thomas Jefferson University
Spitzenberger Folker, Technische Hochschule Luebeck, Centre for Regulatory Affairs in Biomedical Sciences, Germany
St John Andrew, Drajon Health

**SPEAKERS
& CHAIRS**

- Stavelin Anne**, The Norwegian organisation for quality improvement of laboratory examinations (Noklus), Haraldsplass Dianoness Hospital, Bergen, Norway
Stierlin Noel Rouven, Private Universität Liechtenstein / Labormedizinisches Zentrum Dr Risch
Stratton Rachel, UAEFDA
Sura Thanyachai, Mahidol University, Nakhon Pathom (MU)
Svinarov Dobrin, Head, Clinical Laboratory & Clinical Pharmacology, President, Balkan Clinical Laboratory Federation, Alexander University Hospital, Faculty of Medicine Medical University of Sofia, Bulgaria
Tauqeer Alam Mohammad, UAEU
Tomasi Aldo, Scientific Director Technopole of Mirandola and President Clust-ER Health Emilia-Romagna
Topcu Deniz Ilhan, IZMIR CITY HOSPITAL
Trabelsi Abdelhalim, University of Monastir, Faculty of Pharmacy, University Hospital Sahloul Sousse
Tuomilehto Jaakko, University of Helsinki
Urtizbera Jon Andoni, Salpetriere University Hospital
Van Rossum Elisabeth F.C., Erasmus Medical Center Rotterdam
van Schaik Ron HN, Erasmus MC - University Medical Center
Vauzour David, University of East Anglia
Venner Allison, Alberta Precision Labs / University of Calgary
Verna Roberto, World Association of Societies of Pathology and Laboratory Medicine
Wahl Hans Günther, MSB Medical School Berlin, Campus Berlin-Buch
Wilson Michael, Lancet Commission on Diagnostics
Wittwer Carl, University of Utah, USA
Wuhrer Manfred, Leiden University Medical Center
Yaacoub Sana, University of the Holy Spirit Kaslik (USEK), Faculty of Medicine and Medical Sciences, Jounieh, Lebanon
Yang He Sarina, Weill Cornell Medicine
Yaseen Hamad Ali, Kuwait University
Yip Paul M., Sunnybrook Hospital and University of Toronto
Young Ian, Centre for Public Health, Queen's University Belfast, UK
Yu Boya, Hope4Rare
Zaentc Alla, The AEON Clinic
Zayed Ahmed, KU Leuven
Zetterberg Henrik, University of Gothenburg
Zhavoronkov Alex, Insilico
Zourob Mohammed, Alfaisal University, Riyadh, Saudi Arabia

Transform your diagnostic testing with the Optilite® Analyser

The robust and proven analyzer from The Binding Site, bringing you a reliable and optimized solution for special protein testing

- ✓ Unique menu with over 50 assays
- ✓ Fast and consistent throughput averaging 120 tests/hour
- ✓ Global installations > 1500 system supported by technical and scientific experts
- ✓ No manual dilutions
- ✓ 3 methods for antigen excess detection
- ✓ Compact and robust analyser with average MTBF* > 19 months‡



Optilite Assay Menu



Visit us at Booth 44
to discuss our protein diagnostic solutions





Congress
Venue

Dubai World Trade Centre
Trade Centre – Trade Centre 2
Dubai – United Arab Emirates



Congress Secretariat

MZ EVENTS S.R.L.
Via C. Farini 81 - 20159 Milano (Italy)
Phone: +39 02 66802323
E-mail: info@dubai2024.org

For information on any specific topic, please refer to the following e-mails:

General information: info@dubai2024.org
Abstracts & Posters: posters@dubai2024.org
Companies: companies@dubai2024.org
Registrations: registrations@dubai2024.org
Hotel reservation: ostoyanova@kenes.com



Destination partner

REGISTRATION
DESK

The registration desk, located in Concourse 2, is open as follows:

26 May 2024	11:00 - 19:00
27 May 2024	08:00 - 18:00
28 May 2024	08:00 - 18:00
29 May 2024	08:00 - 18:00
30 May 2024	08:30 - 14:00

CONGRESS
LANGUAGE

The official language of the congress is English. No simultaneous translation is provided.

NAME
BADGE

Participants will print the badge at the kiosks located in the Concourse 2. The QR code and the ID number, received by e-mail after the online pre-registration will be mandatory for the printing. The badge must be worn at all times because only registered participants will be admitted to the scientific sessions.

CONGRESS
KIT

The congress kit can be collected at the Bags delivery Desk in the Concourse 2, upon presentation of the name badge.

CERTIFICATE OF
ATTENDANCE

All properly registered attendees will receive a certificate of attendance via e-mail, the week after the congress.

CLOAKROOM

No cloakroom is available in the Congress Centre. Delegates are kindly invited to leave suitcases in the hotels

AUDIOVISUAL
CENTRE

The audiovisual centre is located at the Mezzanine Level. Speakers are kindly requested to bring their presentation to the audiovisual centre on a USB drive at least two hours before the presentation is scheduled. Personal laptops cannot be connected to the system.

CONGRESS
APP

The App is designed to enrich delegates', visitors', and exhibitors' experience. Search "IFCC WorldLab 2024" in the App Store or Google Play and download



E-POSTERS

E-posters are available in the Exhibition Area (Hall 7) from Monday to Wednesday.

ABSTRACT
PUBLICATIONS

All abstracts are published in a special on-line issue of Clinica Chimica Acta (CCA).

WIRELESS
CONNECTION

In the venue there is a complimentary guest WiFi service. Connect to the network "@DWTC Free-WiFi" and enter your details; you will receive a confirmation message.

General Information

REGISTRATION INFO

Full registration and young registration fees include:

- entrance to plenary lectures, symposia, educational workshops, poster area and exhibition
- a free app containing the Scientific Program with the e-posters
- certificate of attendance
- coffee and tea service during morning intermissions
- Opening Ceremony (Sunday, 26 May 2024)
- Closing Ceremony (Thursday, 30 May 2024)

The day registration fee includes, for the day of registration only:

- entrance to plenary lectures, symposia, educational workshops, poster area and exhibition
- a free app containing the Scientific Program with the e-posters
- certificate of attendance
- coffee and tea service during morning intermissions

	On-site registration
Full Registration	€750.00
Young Registration	€375.00
Day Registration	€250.00

Delegates can pay registration fees in euros only; cash or credit card (American Express, MasterCard, Visa) accepted.

LIABILITY AND INSURANCE

Registration fees do not include the insurance of participants against personal accidents, sickness and cancellations by any party, theft, loss or damage to personal possessions.

INDUSTRY EXHIBITION

The exhibits of diagnostics companies make up a very important part of the congress. All major international and local clinical-biochemistry and laboratory-medicine companies are represented.

Participants are encouraged to visit the large industry exhibition, which is located in the Hall 7 and open as follows:

Monday, 27 May	10:00 - 17:30
Tuesday, 28 May	10:00 - 17:30
Wednesday, 29 May	10:00 - 17:30

Access to the exhibition area is free of charge and does not require congress registration. However, for security reasons, anyone wishing to visit the exhibition without registering for the congress must report to the Visitors Kiosks or Desks located in the Concourse 2.

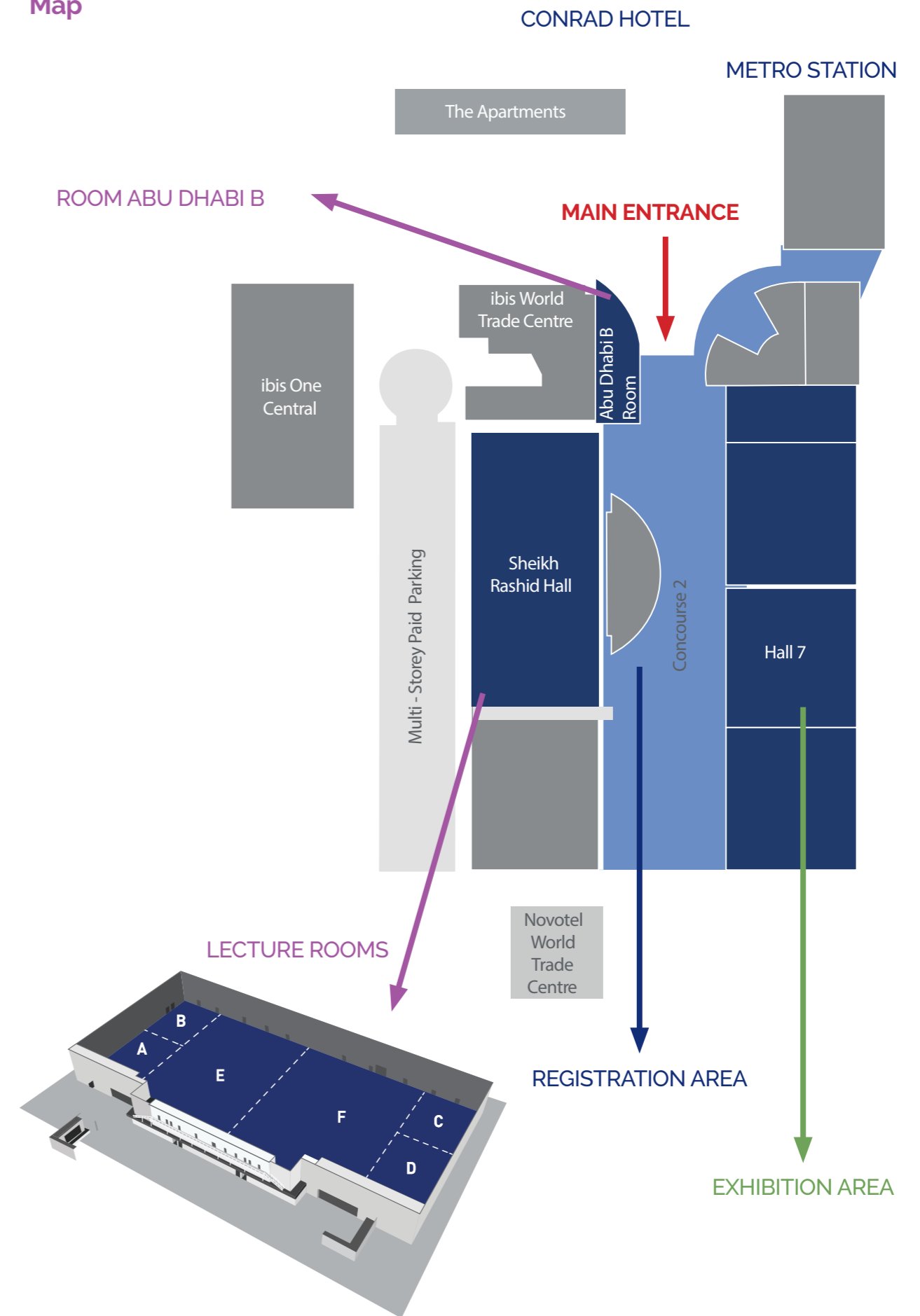
COFFEE POINTS

During intermission in the morning, inside the exhibition area, self-service coffee points offer coffee and tea free of charge for all properly registered delegates.

CASH BAR

Many cash bars will be operating inside the DWTC.

General Map



26th IFCC-EFLM EUROMEDLAB
CONGRESS OF CLINICAL CHEMISTRY
AND LABORATORY MEDICINE

49th ANNUAL MEETING OF THE ROYAL
BELGIAN SOCIETY OF LABORATORY
MEDICINE

FROM **18 TO 22**
MAY 2025

VENUE

Brussels Expo



EUROMEDLAB
BRUSSELS 2025
May 18-22, 2025



Organising Secretariat
MZ Events

info@euromedlab2025brussels.org

15 January 2025 Deadline for poster abstract submission
15 March 2025 Deadline for reduced registration fees

PLATINUM
SPONSOR



COMPANY
PROFILE

Founded in 1995, Snibe is a global leading in-vitro diagnostic solution provider who has focused on the chemiluminescence immunoassay (CLIA) field for more than 28 years and also become the first CLIA manufacturer in China to get FDA-cleared. At present, we have provided customized diagnostic solutions to laboratories in more than 153 countries and regions. Over 30000 units of Snibe's products have reached worldwide, including global chain labs and hospitals like Synlab, Eurofins, Cerba, Synevo, etc. Snibe established 4 core R&D centers, including reagent, instrument, magnetic microbead, and reagent raw material to lay a solid foundation for developing the broadest range of CLIA analyzers and a relevant test menu with more than 200 parameters. Under strong technical support, we successfully launched one of the fastest CLIA analyzer in the world - MAGLUMI X8 with a throughput of 600T/H in 2018; In order to meet the demand of mega-laboratories, Snibe announced a strategic partnership with Thermofisher and Hitachi to launch the Total Laboratory Automation solution in 2019; Moreover, to help fight against COVID-19, Snibe successfully developed the 2019-nCoV (SARS-CoV-2) CLIA Kits in 2020, the first of its kind in the world to receive the CE mark.

"Creating value for human health through continuous innovation" is our mission. Snibe's striving for excellence never ends.

Address and Contact Details:

No. 23, Jinxiu East Road,
Pingshan District 518122 Shenzhen, P. R. China
sales@snibe.com

GOLD
SPONSOR



COMPANY
PROFILE

The key to recovery is often a fast, accurate diagnosis, perhaps today more than ever. There have been many new demands placed on laboratories, but there are also new opportunities to help solve some of healthcare's toughest challenges.

Our end-to-end diagnostics solutions including our innovative Alinity family of systems, total laboratory automation and AlinIQ informatics, are used in hospitals and laboratories around the globe. The crucial information from our tests is often the first step in patient care decision making for hundreds of health conditions from heart attacks to blood disorders to infectious disease concerns. Discover how we can collaborate to help you achieve measurably better healthcare performance with our personalized solutions.

Address and Contact Details:

Abbott GmbH
Max-Planck-Ring 2 - 65205 Wiesbaden, Germany
Tel: +496122 580 - wired@abbott.com

SILVER
SPONSOR



As a world leader in in vitro diagnostics, QuidelOrtho develops and manufactures intelligent solutions that transform data into understanding and action for more people in more places every day.

By uniting the power of Quidel Corporation and Ortho Clinical Diagnostics, QuidelOrtho offers industry-leading expertise in immunoassay and molecular testing, clinical chemistry and transfusion medicine, bringing fast, accurate and reliable diagnostics when and where they are needed – from home to hospital, lab to clinic. So that patients, clinicians and health officials can spot trends sooner, respond quicker and chart the course ahead with accuracy and confidence.

Building upon an 80-year legacy of groundbreaking innovation, we continue to partner with customers across the healthcare continuum and around the globe to forge a new diagnostic frontier. One where insights and solutions know no bounds, expertise seamlessly connects and a more informed path is illuminated for each of us.

At QuidelOrtho, we are transforming the power of diagnostics into a healthier future for all.

Address and Contact Details:

Felindre Meadows, Pencoed
Bridgend, CF35 5PZ
www.quidelortho.com

BRONZE
SPONSOR



COMPANY
PROFILE

**The Binding Site, a part of Thermo Fisher Scientific
For extraordinary protein diagnostics**

Optimizing Multiple Myeloma, immune system disorders, and special protein diagnostics through 35 years of scientific leadership. We provide specialist diagnostic products to clinicians and laboratory professionals worldwide. Our people are dedicated to improving patient lives, delivering innovative medical solutions that improve the diagnosis and management of blood cancers and immune system disorders. Our mission is to enable our customers to make the world healthier, cleaner, and safer.

Address and Contact Details:

8 Calthorpe Road, Edgbaston, Birmingham, B15 1QT
info@bindingsite.com



At Greiner Bio-One, we're not just a company; we're a global force in Preanalytics and Diagnostics. Our cutting-edge products are the heartbeat of medical and laboratory innovation, supporting partners from hospitals to biotech giants.

As a Global Top Player, we're proud to be among the elite in Preanalytics. In the dynamic landscape of the direct market, Greiner Bio-One adeptly tailors its offerings to meet the specific needs of clients. Simultaneously, as an Original Equipment Manufacturer (OEM), we partner in design and production, tailoring our services to meet the unique needs of the life sciences and medical sectors. Discover the Greiner Bio-One difference – where innovation meets precision and direct market expertise.

Our expertise is divided into three dynamic divisions:

- Preanalytics: Revolutionizing specimen collection for both human and animal health.
- BioScience: Advancing cell culture technology, high-throughput screening, and cryopreservation.
- Mediscan: Setting the standard in sterilization.



Founded in 1991, Mindray is a leading global provider of medical devices and solutions. Firmly committed to our mission to "advance medical technologies to make healthcare more accessible," we are dedicated to innovation in the fields of Patient Monitoring & Life Support, In-Vitro Diagnostics and Medical Imaging Systems, amongst others.

Mindray possesses a sound global R&D, marketing and service network. Inspired by our customers' needs, we adopt advanced technologies and transform them into accessible innovations that bring healthcare within reach across the world. While improving quality of care, we help reduce its cost, making it more accessible to a larger part of humanity.

Today, Mindray's products and services are serving healthcare facilities in over 190 countries and regions.

Website: <https://www.mindray.com>

BRONZE
SPONSOR

RANDOX

COMPANY
PROFILE

For four decades, Randox has led the way in diagnostics, offering pioneering solutions that simplify testing processes while maintaining high performance. Our portfolio includes our novel biochip technology, used in detecting conditions ranging from prostate and bladder cancer to Type 1 diabetes, showcases our dedication to advancing diagnostics.

Randox Reagents provides a menu of over 100 assays for clinical chemistry analysis. Integrated into our portfolio, Our Acusera Quality Controls are crucial in ensuring accuracy and precision in test results. These controls undergo rigorous testing to meet stringent standards and deliver dependable results, empowering labs to confidently maintain testing accuracy. The RX series of analysers combines exceptional analytical performance with user-friendly interfaces, improving efficiency and diagnostic accuracy.

Randox is deeply committed to innovation, exemplified by our dedication to improving healthcare worldwide. Our goal is to ensure that laboratories have access to cutting-edge tools and technologies to address evolving healthcare needs.



Founded in 1896 in Basel, Switzerland, as one of the first industrial manufacturers of branded medicines, Roche has grown into the world's largest biotechnology company and the global leader in in-vitro diagnostics. The company pursues scientific excellence to discover and develop medicines and diagnostics for improving and saving the lives of people around the world. We are a pioneer in personalised healthcare and want to further transform how healthcare is delivered to have an even greater impact. To provide the best care for each person we partner with many stakeholders and combine our strengths in Diagnostics and Pharma with data insights from the clinical practice.

In recognizing our endeavor to pursue a long-term perspective in all we do, Roche has been named one of the most sustainable companies in the pharmaceuticals industry by the Dow Jones Sustainability Indices for the thirteenth consecutive year. This distinction also reflects our efforts to improve access to healthcare together with local partners in every country we work. In the Middle East, Roche offers comprehensive pharmaceutical and diagnostic expertise through the relevant and appropriate channels in 14 countries: Bahrain, Egypt, Iran, Iraq, Jordan, Kuwait, Lebanon, Maldives, Oman, Palestine, Qatar, Saudi Arabia, Syria, United Arab Emirates, and Yemen.

For more information, please visit www.roche-middleeast.com

Website [roche-middle east.com](http://roche-middle-east.com)

Social Media

LinkedIn, Instagram and Meta

EXHIBITORS

COMPANY
PROFILE

ARK Diagnostics

ARK Diagnostics Inc. develops, manufactures, and distributes in vitro diagnostic immunoassays for Therapeutic Drug Monitoring (TDM) and Urine Drug Testing (UDT). For TDM, clinicians use these measurements to guide dosing decisions for safe, effective, and personalized drug therapy. By optimizing drug levels, clinicians improve outcomes, reduce toxicity, and lower healthcare costs. For UDT, ARK has several unique assays for Fentanyl II, Pregabalin II, Gabapentin, and Methylphenidate Metabolite. Additionally, ARK has many other unique TDM and UDT Assays.

ARK's quality management system is certified to ISO 13485:2016. The company is committed to quality compliance and carefully follows Good Manufacturing Practices. ARK uses its unique blend of scientific expertise and deep industry knowledge to deliver high-quality assays for new generations of drugs. Its highly regarded homogeneous enzyme immunoassay technology is adaptable to a variety of clinical chemistry analyzers.

Founded in 2003, ARK Diagnostics, Inc. is based in Fremont, California.

Autobio Diagnostics

Established in 1998, Autobio Diagnostics Co., Ltd is a global leader in clinical diagnostics, specializing in immunoassay, microbiology, and biochemistry, while demonstrating a strong commitment to advancing molecular diagnostics for medical laboratories.

With 25 years of R&D excellence, Autobio allocates over 14% of revenue to innovation. The extensive diagnostic antibody library covers tens of thousands of antigen epitopes, securing over 73% self-supply for a stable chain. Over a third of our workforce focuses on top-quality R&D. Autobio prioritizes not only product quality and sophisticated manufacturing but also customer satisfaction, ensuring superior service through a team of 800+ professional engineers worldwide.

Thriving in 90+ countries, Autobio is dedicated to shaping the future of diagnostics globally. This dedication is mirrored in our expanding industrial park, covering 250 acres, which stands as a testament to our commitment to advancing international healthcare solutions.

Address:

Street: No.199, 15th Ave, National Eco&Tech Development Area, 450016 Zhengzhou, China

Phone: +86-371-6798-5313

Email: info@autobio-diagnostics.com

<https://en.autobio.com.cn>

Babirus

Where Accuracy Meets Innovation in Healthcare Diagnostics.
Your Choice in Advancing Patient Care!

Babirus' mission is to provide the most accurate and innovative diagnostics solutions to healthcare providers since 2008. The company achieves this by employing cutting-edge technology, expert personnel, and a commitment to continuous improvement.

Babirus is committed to working with healthcare partners across the MENA region to deliver innovative and advanced diagnostic solutions that help to improve people's health. We believe that the key for helping medical specialists to improve patient outcomes is through a continuous program of medical education and trainings as well as offering ongoing scientific support from our highly dedicated and qualified team.

Babirus provides market leading and technologically innovative products from global healthcare companies, specialized in:

Babirus will always growth, profitability, continuity, and satisfaction of all its clients!

BD

BD is one of the largest global medical technology companies in the world and is advancing the world of health by improving medical discovery, diagnostics and the delivery of care. The company supports the heroes on the frontlines of health care by developing innovative technology, services and solutions that help advance both clinical therapy for patients and clinical process for health care providers. BD and its 77,000 employees have a passion and commitment to help enhance the safety and efficiency of clinicians' care delivery process, enable laboratory scientists to accurately detect disease and advance researchers' capabilities to develop the next generation of diagnostics and therapeutics. BD has a presence in virtually every country and partners with organizations around the world to address some of the most challenging global health issues. By working in close collaboration with customers, BD can help enhance outcomes, lower costs, increase efficiencies, improve safety and expand access to health care.

For more information on BD, please visit www.bd.com or connect with us on LinkedIn at www.linkedin.com/company/bd1/ and Twitter @BDandCo.

Social media links:

<https://www.linkedin.com/company/bd1>

<https://www.facebook.com/BectonDickinsonandCo>

<https://twitter.com/BDandCo>

https://www.youtube.com/channel/UCPGmutY43EjP_3jOugNGnA

BD (@becton_dickinson) • Instagram photos and videos

Bühlmann

BÜHLMANN is a renowned in the field of quantitative fecal analysis, with a focus on calprotectin and pancreatic elastase. Demonstrated clinical reliability, supported by over 100 peer-reviewed studies, underpins our offerings. The Quantum Blue® rapid calprotectin, infliximab and adalimumab testing, offers efficient lateral flow analysis for immediate therapy adaptation in inflammatory diseases. Continuing our tradition of innovation, the BÜHLMANN fCAL® turbo assay provides streamlined workflow in modern lab environments with random access on clinical chemistry platforms for seamless integration into laboratory routine.

The innovative CALEX® stool preparation device ensures high-quality samples for quantitative fecal analysis, offering ease of use and limiting direct contact with stool. The design and the consequent separation of pre-analytics and analytics allows lay persons to collect, and lab staff are only required to integrate samples into the laboratory's tracking systems.

BÜHLMANN's commitment to efficiency and precision sets the standard for cutting-edge solutions in laboratory diagnostics.

The Exhibiting COMPANY's main fields of activity are:

- Development and manufacturing of unique immunoassays
- Distribution of in vitro diagnostic products

Address and Contact Details:

BÜHLMANN Laboratories AG

Baselstrasse 55 CH-4124 Schönenbuch

Phone +41 61 487 12 12 Fax +41 61 487 12 34

Email info@buhlmannlabs.ch

Web www.buhlmannlabs.ch

City Pharmacy

Established in 1967 by Dr. Abdulrahman Almahmeed, City Pharmacy Co. has dedicated itself to the advancement of Pharmaceutical & Health Care services in UAE.

Today, City Pharmacy Co. has proved beyond doubt that it has the resources, facilities, skills and vision leading towards the realization of this goal. Looking to the future, we are confident that we will be instrumental to the continued development of this success...so much so that we believe – the best is still yet to come! With over 50 years of expertise, City Pharmacy Co. Group is first of a kind in the growth of Pharmaceutical and Medical services in UAE. Our team of highly professional employees oversees every step in the process to ensure you receive the best quality service. City Pharmacy Co. has consistently achieved remarkable growth and today ranks No.1 in UAE's market for pharmaceutical, medical and associated products and equipment.

<https://www.citypharmacy.com/>

Controllab

Controllab is the largest Brazilian laboratory quality control company. Since 1977, our mission has been sowing quality and taking care of life. Our 47-year history is based on offering complete and integrated solutions in quality and assertiveness of laboratory results.

With more than 3,500 tests, Controllab facilitates routine for laboratory accreditation processes and regulatory bodies. We are a full solution company in several segments: clinical, blood bank, veterinary, microbiology and physical-chemical tests for medicines, food, sanitizers, water and effluents, fuels and others, among services that serve hospitals and industries. Committed to improving user experience, we help clients to provide accurate, indisputable services and that stand out in the national and international markets. We have unique know-how in quality control solutions. We have the exclusive support of important scientific societies and the recognition of the main standards related to our performance: ISO 9001, 17025, 17034 and 17043.

Address and Contact Details:

Ana Neri street 416 - Benfica, Rio de Janeiro RJ, 20911-442, Brazil

Tel: +55 21 3891-9900 / +55 21 3613-5200

Website: <https://controllab.com/en/>

Dedalus

Dedalus is a leading healthcare and diagnostic software solutions provider globally, with over 30 years of experience in implementing successful laboratory solutions in over 5700 laboratories worldwide.

Our comprehensive portfolio for the clinical laboratory offers the full range of Clinical Pathology, Anatomic Pathology, Digital Pathology, and Genetic solutions alongside result reporting, quality assurance, and Middleware software, supporting laboratory and clinical professionals across the full diagnostic result generation chain, from patient admission or diagnostic request, sample verification, sample distribution to result reporting.

Our goal is to enable precision medicine and optimal, interdisciplinary stakeholders' decisions across the continuum of care, leveraging cloud, digital technologies, and AI to improve health outcomes. We advocate a fully integrated and patient-centered diagnostic system, enabling HCPs to leverage complex, ever-growing diagnostic testing data, to enhance care decisions at every stage of people's lives. Leading us to be the partner of choice.

Address and Contact Details:

Barbara Francioni

Principal, Marketing – In Vitro Diagnostics Business Unit

M. +44.7507.487075

E. barbara.francioni@dedalus.com

DiAgam

DiAgam is a European company, with more than 30 years of experience, which manufactures Turbidimetric Specific Protein reagents. Our operations are ensured through our direct affiliates in Belgium, France, Spain, Portugal, and Brazil. We also export in ASEAN, EMAE, LATAM and US markets.

Recognized as a very good quality assays, our leading innovative solutions are offered in user friendly instrument specific packaging for open chemistry systems from world leading instrument manufacturers including Abbott, Beckman Coulter, Siemens, Ortho Clinical Diagnostics or Roche*. These end-finished packaging kits save operator time and improve laboratory efficiency by eliminating reagent transfer.

Our solutions are also available in OEM for any distributor which is looking for a high-quality Specific Protein reagents menu.

Menu:

Albumin (immunological), Albumin in Csf, Alpha-1-acid glycoprotein, Alpha-1-antitrypsin, Alpha-1-microglobulin, Alpha-2-macroglobulin, Beta-2-microglobulin, ApoA1, ApoB, ASO, Calprotectin, C3, C4, Ceruloplasmin, CRP, Haptoglobin, IgA, IgE, IgG, IgG in Csf, IgM, Lipoprotein(a), Microalbumin, Prealbumin, Rheumatoid Factor, RBP, Transferrin.

*All products names, registered trademarks, company names in this document remain the property of their respective owners

CERTIFICATION: ISO 9001:2015 - ISO 13485:2016

DiaSys

DiaSys Diagnostic Systems - Diagnostic system solutions and service of outstanding quality!

DiaSys GmbH has been a leading specialist in development and manufacturing of diagnostic system solutions for more than 30 years. Our goal is to combine high quality with ease of use and to reduce environmental burden. DiaSys has introduced more than 90 clinical chemistry and immunoturbidimetric reagents in user-friendly kits for manual or automated use. All reagents ensure reliable results in routine and special diagnostics.

The instrumentation portfolio comprises automated clinical chemical analyzers for small to medium sized laboratories, semi-automated analyzers and POCT instruments. In addition, DiaSys offers a broad range of calibrators and quality control materials.

DiaSys has been an ISO 13485-certified company since 1996. Customers and partners in more than 140 countries rely on the quality of DiaSys.

Address and Contact Details:

DiaSys Diagnostic Systems GmbH

Alte Strasse 9 - 65558 Holzheim, Germany

E-mail: mail@diasys.de

Phone: +49 6432 9146-0

Web: <http://www.diasys-diagnostics.com>

Disera

Disera was founded in 1996 in Izmir/Turkey and began with the production of laboratory consumables. Today, Disera is one of the leading international companies in the industry, specializing in the production and development of blood collection tubes including blood collection accessories, urine collection systems and PRP products. Disera is furthermore active in the laboratory diagnostics sector in its home market.

For us as a company, the patient's comfort and healthcare workers safety come first. Our value proposition with our products and services is to improve the overall standard of living and health of the communities around the world.

As a producer of plastic medical products, we combine the production of high-quality products with an energy efficient and sustainable operation. Disera has its own solar power plant that supplies over 3 megawatts of electricity to all of the production facilities. In 2023, the first 20 kW/10MeV E-BEAM sterilization system in Turkey was put into operation by Disera.

Address and Contact Details:

5758 Sok.No:4H /11, 35110 Karabağlar – İzmir/Türkiye.
info@disera.com.tr

Gelecek

Gelecek offers innovative and reliable preanalytical and post analytical solutions for low, medium and high volume laboratories and hospital's blood collection services. With the solutions we offer under the Futurelab brand name, your preanalytical and post analytical operations are simplified, manual tasks and workload are reduced, and your productivity and quality increase. Our Solutions widely used hospitals and laboratories.

Address and Contact Details:

Teknopark İstanbul Sanayi Mahallesi Teknopark Bulvarı 5A/107
34906 Pendik İSTANBUL
Contact mail : info@gelecekmuhendislik.com
Contact number : +902169996307
Website : www.gelecekmedikal.com

**HVD Life
Sciences**

HVD Life Sciences is a marketing and distribution company that specializes in sourcing, supplying and supporting life science solutions. We bring a global perspective to our business worldwide, covering regions including Central and Southeast Europe, the Middle East, Africa, the Commonwealth of Independent States, and the Far East.

We offer a wide range of high quality products from carefully selected manufacturers of innovative and industry-leading tools and technologies. With all of our suppliers, we focus on building strong relationships that will ensure long-term success for our customers, our partners and ourselves. Explore our portfolio online at www.hvdlifesciences.com

IVD Group

IVD GROUP Sp. z o.o. offers a complete solution for benchmark preanalytics. MedNAIS App is an iOS and Android application offering a library of guidelines for various sample types. Easy-to-follow step-by-step instructions accessible right on your smartphone or MedNAIS Smartwatch.

MedNAIS Smartwatch, designed specifically for medical nurses offering real-time assistance and efficiency enhancement through our specialized KPI analysis (patient turnaround time, exact sampling time and others). This innovative technology is designed to digitize preanalytical processes at their point of origin—in the sampling room.

MedNAIS Logger our advanced solution for logistics. Provides online reporting of transportation parameters (temperature, humidity, illuminance, vibration, GPS location), coupled with an automatic dispatch system for notifications. This ensures immediate action in case of non-compliance with transportation standards, guaranteeing the integrity of every sample.

Our largest online web shop IVD reagents and disposables of top brands available at <https://ivdgroup.eu/products/>. We are looking for suppliers!

Contact Details:

info@samplify.org
<https://samplify.org>

Jeddy

Jeddy is a technology company based in Switzerland with the ultimate aim of designing and developing high-end multipurpose drones.

With the mission Delivery where it matters, when it matters, the company was founded in early 2021. Currently, Jeddy is making tremendous strides in the provision of healthcare, and emergency and courier services. Due to advanced and automated features, the Jeddy Glider (drone), is capable of delivering payload in tough terrains, distant areas, and destinations with poor infrastructure facilities with high success rate. Actually, Jeddy is the first company in the world to dock directly to a window or balcony with its delivery drone, making it even faster and easier to ship medical supplies.

Essentially, this is a sustainable and long-term solution to advancing efficiency, a critical aspect in saving human lives that would otherwise be lost if conventional methods were used.

<https://jeddy.com>

**Keyu Biological
Engineering**

Zhuhai Keyu Biological Engineering Co., Ltd. (stock code: 870620) is a hi-tech service provider dedicated to R&D, manufacturing and sales of in vitro diagnostic analytical instruments and reagents. As a professional service provider of IVD and a leader in Automated Feces Analyzers, KEYU provides such products as Automated Urine Analyzers, Feces Analyzers, Leucorrhoea analyzers, and related reagents. Till now, we have more than 2,000 dealers and 3000 hospital clients worldwide, including 470+ 3A hospitals and 100+ ISO 15189-accredited medical laboratories.

Address and Contact Details:

Website www.keyubio.com

Address: 1/f, 2/f, building 2, No.605, Yuge road, Sanzao town, Jinwan district, Zhuhai City, Guangdong Province, 519040, P.R.China

Lifespın

Lifespın GmbH is redefining healthcare diagnostics with its groundbreaking platform that merges artificial intelligence (AI) and Nuclear Magnetic Resonance (NMR) technology. By accurately analyzing the metabolome from blood samples, Lifespın crafts digital twins of patients, delivering unprecedented metabolic insights for over 700 diseases, including oncology, neurology, and inflammatory conditions. This innovative approach not only elevates preventative care, diagnostics, and treatment to new heights but also does so with remarkable cost efficiency and scalability.

Embracing the power of AI, Lifespın transforms traditional blood samples into digital counterparts, enabling detailed health assessments through a patient's digital twin. This leading-edge solution is poised to revolutionize precision medicine, offering a robust, scalable platform that significantly undercuts traditional costs. As a visionary leader in healthcare technology, Lifespın GmbH is pushing the boundaries of personalized medicine, ensuring its position at the forefront of the industry with a commitment to enhancing patient care through technological excellence.

LumiraDx

LumiraDx is transforming community-based healthcare by providing fast, accurate and comprehensive diagnostic information at the point of need, enabling better medical decisions that lead to improved outcomes at a lower cost. The company's innovative LumiraDx Platform is designed to perform a broad menu of tests including infectious disease, cardiovascular disease, diabetes, and coagulation disorders and deliver lab-comparable performance with results in less than 12 minutes. Founded in 2014, LumiraDx is based in the UK with R&D and manufacturing sites across the US and Europe. For more information, please visit www.lumiradx.com.

Address and Contact Details:

Mr. Paul Campbell

Global Product Director, Cardiometabolic

Unit 4 Block 3 Manor Farm Business Park, Manor Long, Stirling FK9 5QD - UK

Tel.: +353 83 449 0378

Website: <https://www.lumiradx.com/>

Maccura

Maccura was founded in 1994 and has been focusing on the research, manufacture, marketing, and services of IVD products. Maccura is a hi-tech enterprise certified by related national departments and has passed not only the certification of CMD ISO13485, CQC ISO14001, TUV ISO13485, but also the CE certification for some products. We have a world-class R&D, manufacture and operation team, have completed the layout of whole industrial chain from biological raw materials, medical laboratory products to professional services, and have the systematic ability to research and manufacture IVD instruments, reagents, calibrators and control materials. Our products have covered platforms of biochemistry, immunoassay, POCT, hematology, molecular diagnosis and pathology, and could meet more than 90% requirements of medical labs with the product integration.

With the corporate vision of "To be a World-Class IVD Enterprise", we provide quality products and services to our customers by concentrating on technology innovation.

Address and Contact Details:

Dean zhao +86 138-8069-2324

dean.zhao@maccura.cn

16#, Baichuan Road, Hi-tech Zone, 611731 Chengdu, China

**MassSpec
Medical**

MassSpec Medical is a new company founded by mass spectroscopy senior scientists, life and medical science researchers, clinical microbiologists and IT specialists. We use (modified) immunoassay in mass spectroscopy and mass spectroscopy in immunoassay resulting in ultimate specificity, good sensitivity, multiplexing options, high throughput and speed as well as ease of use and low cost.

In bacteriology, we offer our proprietary bacterial wall polysaccharide profiling and in silico protein/peptide libraries.

Nephrolyx

Nephrolyx offers precise and rapid measurement of kidney function (True GFR). We provide laboratories and hospitals with an In-Vitro Diagnostic Test (Nephrolyx IVDx) and a digital platform. This CE-certified, ready-to-use solution allows for precise renal function measurement (mGFR) in just a few hours, easily integrating into clinical routines. For the first time, physicians can diagnose renal diseases with unparalleled accuracy, enabling them to utilize precision medicine and develop optimal treatment plans for patients. This is especially beneficial for patients in nephrology, oncology, transplantation, and ICU settings. The Nephrolyx IVDx utilizes in-vitro quantitative determination of serum iohexol concentration, recognized as the highest accuracy gold standard by the EMA, FDA, and the 2024 KDIGO CKD guidelines. Nephrolyx's proprietary technology enhances treatment outcomes for patients. Given its low component cost, the Nephrolyx True GFR Measurement can also significantly enhance the performance of the entire healthcare system.

Address and Contact Details:

Nephrolyx GmbH

Johann-Hittorf-Straße 8 - 12489 Berlin - Germany

www.nephrolyx.com - contact@nephrolyx.com

Neurocode

p-Tau217

Neurocode's pioneering assay measures levels of phosphorylated tau at position 217 (pTau217). pTau217 is widely considered to be the leading transformative blood-based biomarker that will enable earlier and more accurate AD diagnosis, improved patient care and treatment. The introduction of new compounds in represents a significant advancement in disease-modifying therapy of Alzheimer's disease will change the trajectory. We will offer this test shortly in several counties around the world.

Neurocode is a clinical laboratory that offers novel and innovative FDA-approved, and laboratory-developed tests, specializing in neurodegeneration and neuroimmunology biomarkers for clinical and research use. They work closely with researchers to advance the field of AD diagnostics and perform thorough validations of novel biomarkers to empower clinicians to make informed decisions. To learn more about accessing the ALZpath Dx test and Neurocode's full range of diagnostic solutions, please visit neurocode.com or info@neurocode.com contact us below.

Address and Contact Details:

3560 Meridian, Suite 101 | Bellingham, WA 98225, USA | +1425.312.3791 | +1360.527.4596 (Fax) | CustomerCare@neurocode.com | neurocode.com

Nova Biomedical

Nova, a world leader in point of care (POC) and critical care in-vitro diagnostics, offers the following products:

Stat Profile Prime Plus® blood gas critical care analyzers offer the most clinical value for critical care testing with a 24-test menu and important new tests for iMg, estimated plasma volume (ePV), Urea, Creatinine. StatStrip® Glucose/Ketone offers lab-like accuracy for testing critically ill patients while eliminating interferences from ascorbic acid, hematocrit, maltose, oxygen, and other substances. StatStrip® Lactate/Hb & Hct offers rapid screening and monitoring of sepsis or for use as an alternative to fetal scalp pH testing; the Hb & Hct strip provides a rapid anemia assessment. StatSensor® and Nova Max Pro eGFR meters measure capillary blood creatinine and calculate eGFR for rapid renal function screening or assessment prior to using contrast media. Allegro® is a compact blood capillary blood analyzer that measures HbA1c, Lipids, Glucose, Creatinine, CRP, PT/INR and urine albumin/creatinine using disposable cartridges and test strips. EMS Stat™ is a portable system for A&E use for rapid glucose, ketone, lactate, hemoglobin, and hematocrit testing using tiny capillary blood samples.

Address and Contact Details:

Nova Biomedical
200 Prospect Street, Waltham, Massachusetts 02454 USA
Tel. 781-894-0800 - Fax. 781-894-5915
Email. info@novabio.com
Web site. www.novabiomedical.com

RfB/SPMD

RfB/SPMD – Quality assurance for medical laboratories

RfB/SPMD stands as a global leader in quality assurance solutions for medical laboratories, underpinned by its own accredited calibration laboratories in accordance with DIN ISO/IEC 17025 and DIN EN ISO 15195 standards. Our surveys, spanning over 730 analytes in laboratory medicine, serve participants worldwide and are conducted in German and English. Using web-based platforms, from order placement to result submission and certificate delivery, our surveys are seamlessly conducted online through our web portal. Accredited according to DIN EN ISO/IEC 17043 we maintain unwavering commitment to stringent quality standards. Additionally, our surveys are supported by reference laboratories, further enhancing the accuracy and reliability of our assessments. This integrated approach ensures that laboratories worldwide receive the highest quality assurance services, reinforcing confidence in their processes and results. Proudly "made in Germany," RfB/SPMD epitomizes excellence in laboratory quality assurance on a global scale.

Sansure Biotech

Sansure Biotech Inc. is an in vitro diagnostic all-round solution provider that integrates diagnostic reagents, instruments, and independent clinic laboratory services with innovative gene technology as its core. The company is listed on the Chinese Science and Technology Innovation Board and has ranked in the Top 100 Healthcare Company in China for 3 consecutive years. Sansure has developed more than 1000 test kits/reagents covering 6 major fields: prevention and control of infectious disease diagnosis, healthcare for women and children's health, blood transfusion safety, prevention and control of cancer, companion diagnostics, agriculture and animal husbandry technology, etc.

As a leading Chinese molecular diagnostic enterprise, Sansure is accelerating its transformation into a global leader in in-vitro diagnostics and striving to create high-quality products.

**Waters
Corporation**

Waters Corporation unlocks the potential of science by providing the tools, technology and insights that enable scientific breakthroughs in labs across the globe.

For over 60 years, Waters has provided high-value analytical technologies and industry leading scientific expertise, with solutions that serve life, materials, and food sciences. Having pioneered innovations in chromatography, mass spectrometry, and thermal analysis, the company operates a robust business model with instruments, software, service, and other recurring revenues.

With its diverse, global footprint, Waters serves high volume segments in resilient end-markets where routine analysis is often required to meet quality standards and regulatory requirements. This includes:

- Pharmaceutical development and manufacturing quality
- Food, water, and environmental testing
- Materials analysis, including battery characterization and testing for electric vehicles.

In practice, our instruments and software ensure the safety of the medicines we take, the purity of the food and water we consume, and the quality and durability of products we use every day.

With approximately 7,900 employees worldwide, Waters operates directly in 35 countries, including 15 manufacturing facilities, and with products available in more than 100 countries."

Weqas

Weqas is one of the leading External Quality Assessment (EQA) providers with over 50 years' experience in Quality Assurance, providing solutions in Laboratory Medicine.

We have expert teams of scientists delivering service in Laboratory EQA, Point of Care (PoCT) EQA, Reference Measurement Services, Internal Quality Control (IQC), Quality Control Reference Material (QCRM) Service, and Education and Training Services.

Benefits of working with Weqas:

1. Accredited to ISO 17043, 17025 and 15195.
2. Over 50 EQA programmes.
3. Access to EQA participant portal to allow easy monitoring of instrument performance.
4. Reference Measurement Service for traceability.
5. Standard and bespoke IQC and QCRM.

YHLO

Shenzhen YHLO Biotech Co., Ltd.

YHLO (EST. 2008) is an innovative company of immunoassay solutions headquartered in Shenzhen, China, specialized in developing, manufacturing IVD instruments and reagents.

To be a reliable and respected IVD enterprise, YHLO has put extensive investments in R&D and firmly associated with top universities and research institutes worldwide on scientific studies. With over a decade's continuous development expertise in immunoassay solution, YHLO may provide a broad range of instruments with patented technologies and outstanding features, as well as a comprehensive total solutions in fertility and reproductive health, infectious diseases, autoimmune disorders and other novel assays on rare diseases analysis.

To date, YHLO has a global presence by over 110 countries and regions worldwide. Moreover, YHLO has in-depth cooperation with oversea research partners in Europe, USA, Japan and Australia, with aim of developing advanced technologies and create more medical value for health and vitality of people all over the world.

Address and Contact Details:

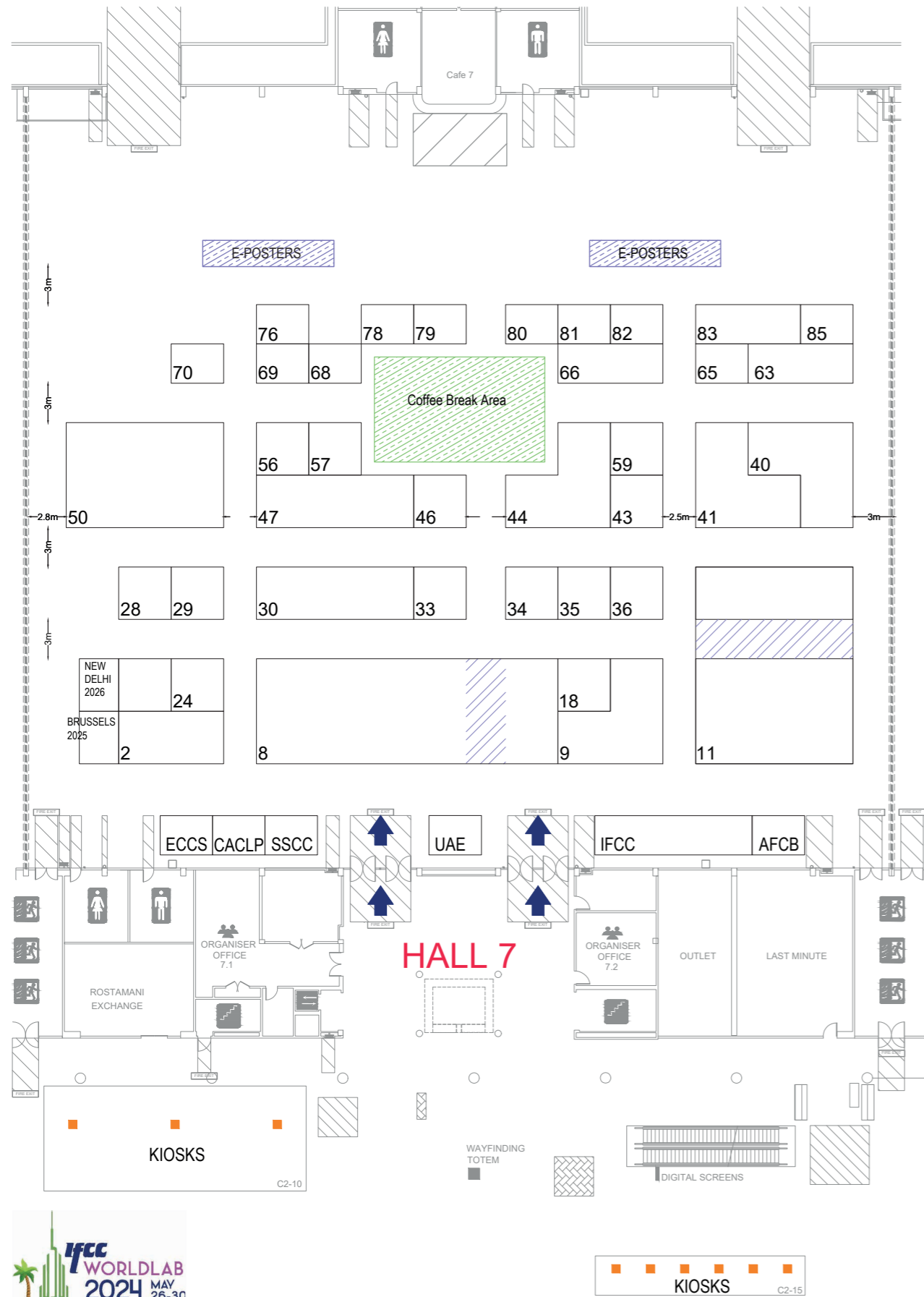
Paul Lin

008613691865720

paul.lin@szyhlo.com

Shenzhen Longgang District Baolong Street Baolong Road Yahuilong Biotech Park

FLOORPLAN HALL 7



EXHIBITORS' LIST

COMPANY	BOOTH	COMPANY	BOOTH
ABBOTT	11	LIFESPIN	80
ARK DIAGNOSTICS	43	LUMIRADX	76
AUTOBIO	9	MACCURA	83
BABIRUS	28	MASS SPEC MEDICAL	24
BD	59	MINDRAY	40
BINDING SITE	44	NEPHROLYX	68
BÜHLMANN	46	NEUROCODE USA	82
CITY PHARMACY	85	NOVA BIOMEDICAL	66
CONTROLLAB	65	QUIDELORTHO	50
DEDALUS	63	RANDOX	41
DIAGAM	29	RFB - SPMD	78
DIASYS	36	ROCHE	47
DISERA	56	SANSURE	35
GELECEK	69	SNIBE	8
GREINER BIO-ONE	30	VISION - Technical Booth	18
HVD Life Sciences	79	WATERS Corporation	57
IVD GROUP	34	WEQAS	33
JEDSY	81	YHLO	2
KEYU Biological Engineering	70		

SPONSORS

PLATINUM SPONSOR



GOLD SPONSOR



SILVER SPONSOR



BRONZE SPONSOR



PARTNERS OF 8TH UAEGDA INTERNATIONAL GENETIC DISORDERS CONFERENCE

STRATEGIC PARTNERS



KNOWLEDGE PARTNER



SUSTAINABILITY PARTNER



ACADEMIC PARTNERS



PARTNERS OF 8TH UAEGDA INTERNATIONAL GENETIC DISORDERS CONFERENCE

PARTNERS



IFCC WORLDLAB NEW DELHI 2026

27TH INTERNATIONAL CONGRESS OF CLINICAL CHEMISTRY AND LABORATORY MEDICINE
52ND CONGRESS OF ASSOCIATION OF CLINICAL BIOCHEMISTS OF INDIA

25-29 OCTOBER 2026
INDIA INTERNATIONAL CONVENTION & EXPO CENTRE

www.ifccnewdelhi2026.org

15 MAY 2026 Deadline for abstract submission
15 JULY 2026 Deadline for reduced registration fees

Organising Secretariat
MZ Events
info@euromedlab2025brussels.org



